



Sony Ericsson

# Working Instructions

## - mechanical -



**G705**



## CONTENTS

<b>1</b>	<b>Exterior Views.....</b>	<b>4</b>
1.1	G705 .....	4
<b>2</b>	<b>Tools .....</b>	<b>5</b>
<b>3</b>	<b>Disassembly.....</b>	<b>6</b>
3.1	Battery Cover.....	6
3.2	Battery .....	7
3.3	Rear Cover .....	7
3.4	Main PBA.....	8
3.5	SIM Flex/Carrier Unit.....	11
3.6	Co-Branding.....	13
3.7	Screw Sheets .....	13
3.8	Front Cover .....	14
3.9	Navigation Key Unit .....	16
3.10	Display .....	17
<b>4</b>	<b>Replacement .....</b>	<b>18</b>
4.1	Battery Cover.....	18
4.2	Rear Cover .....	18
4.3	Co-Branding.....	18
4.4	Screw Sheet.....	18
4.5	Front Cover .....	19
4.6	Display .....	19
4.7	Hinge Slider .....	19
4.8	Knob Lock for Battery Cover .....	20
4.9	Water Indicator .....	22
4.10	Cushion for Speaker Connector .....	23
4.11	Core Unit Label.....	24
4.12	Loudspeaker.....	25
4.13	Volume Key.....	27
4.14	Camera Key .....	29
4.15	Music Key .....	31
4.16	Gasket BB .....	33
4.17	Shield Can Lid AGPS .....	34
4.18	Shield Can Lid BB .....	35
4.19	Shield Can Lid W-LAN .....	36
4.20	Shield Can Lid for Camera Socket.....	37
4.21	Camera - Rear .....	39
4.22	Gasket SIM.....	41
4.23	SIM Flex Module .....	42
4.24	Carrier for SIM Holder .....	44
4.25	Navigation Keypad .....	45



4.26	Magnet.....	46
4.27	Dome Sheet.....	47
4.28	Keyboard.....	48
4.29	Key Flex Module.....	50
4.30	Navigation Key PBA.....	52
4.31	Slider Flex Module.....	53
4.32	Camera - Front.....	56
5	Reassembly.....	58
5.1	Display .....	58
5.2	Navigation Key Unit .....	58
5.3	Front Cover .....	60
5.4	Screw Sheets .....	61
5.5	Co-Branding.....	62
5.6	SIM Flex/Carrier Unit.....	63
5.7	Main PBA.....	64
5.8	Rear Cover .....	66
5.9	Battery .....	67
5.10	Battery Cover.....	68
6	Revision History .....	70

**For general information about mechanical repair related issues, refer to  
1220-1333: Generic Repair Manual - mechanical**



# 1 Exterior Views

## 1.1 G705





## 2 Tools

### SPECIAL TOOLS

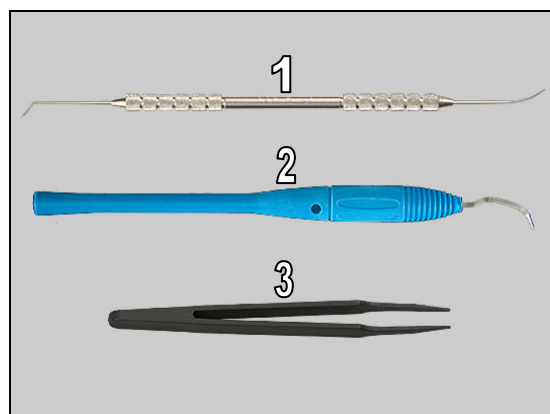
1. Torque Screwdriver
2. Bits (T6)
3. Bits (JCIS No 0)
4. Front Opening Tool
5. Camera Removal Tool 3MPixel  
(for camera - rear)
6. Camera Removal Tool  
(for camera - front)
7. Plectrum/SVC & Repair



**For part no's on the tools above, refer to the 'Tools Catalogue' and/or the 'Tools Matrix'!**

### STANDARD TOOLS

1. Dentist hook (needle-shape)
2. Dentist hook (curve-shape)
3. Tweezers (ESD-safe & non-metallic)

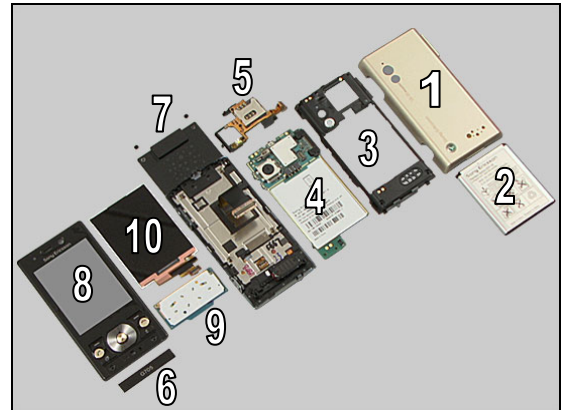




## 3 Disassembly

The disassembly is done in the following order:

1. Battery Cover
2. Battery
3. Rear Cover
4. Main PBA
5. SIM Flex/Carrier Unit
6. Co-branding
7. Screw Sheets
8. Front Cover
9. Navigation Key Unit
10. Display



### 3.1 Battery Cover

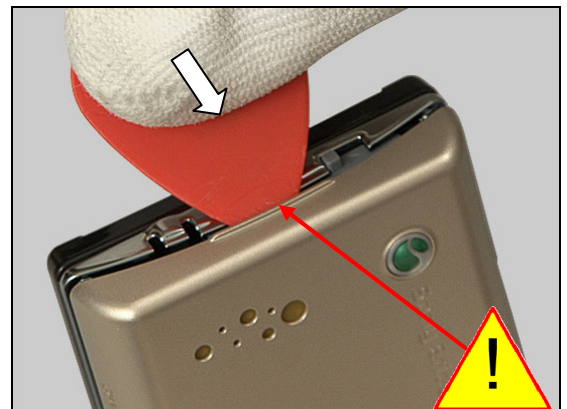
Close the slider.



Push the knob lock in the direction of the arrow to unlock the Battery Cover.



Insert the Plectrum to release the Battery Cover.



## Disassembly

1. Raise the Battery Cover at the bottom.
2. Lift it off to remove it.

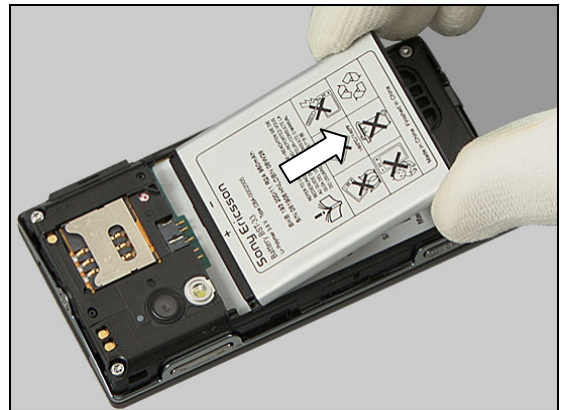


### 3.2 Battery

Insert the Front Opening Tool and raise the bottom of the Battery to release it.



Remove the Battery.



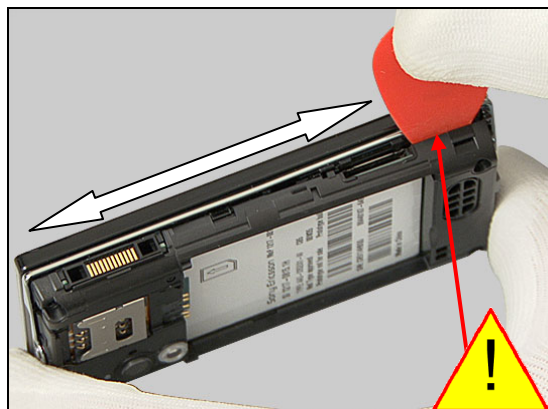
### 3.3 Rear Cover

Remove these four 4.5 mm nickel screws by using torx bit no. 6.

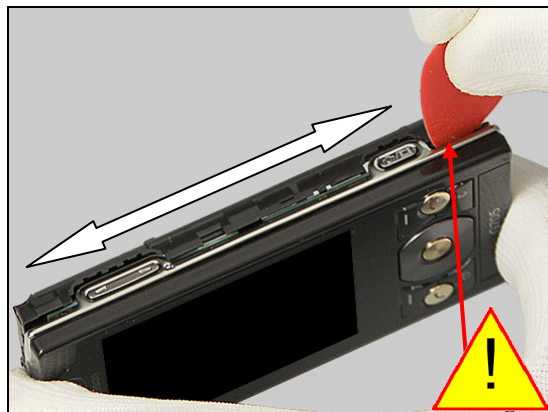


## Disassembly

Insert the Plectrum as shown in picture and gently slide back and forth to release this side of the Rear Cover.



Do the same on the opposite side.

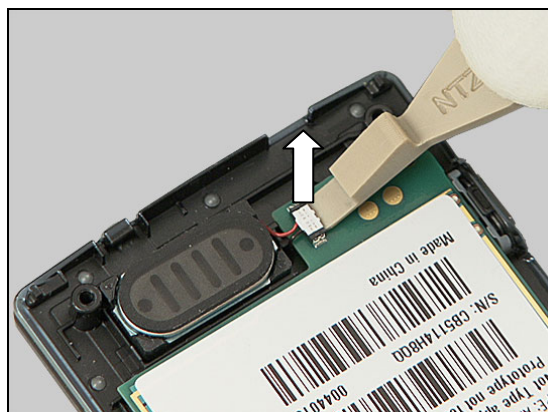


Remove the Rear Cover by lifting straight up.



### 3.4 Main PBA

Insert the Front Opening Tool underneath the connector as shown in picture and pull upwards to disconnect the Loudspeaker from the Main PBA.



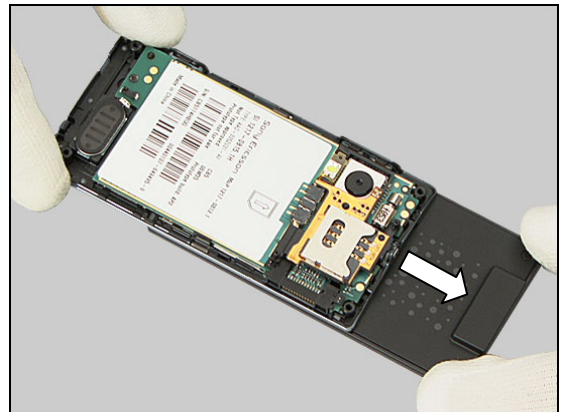


## Disassembly

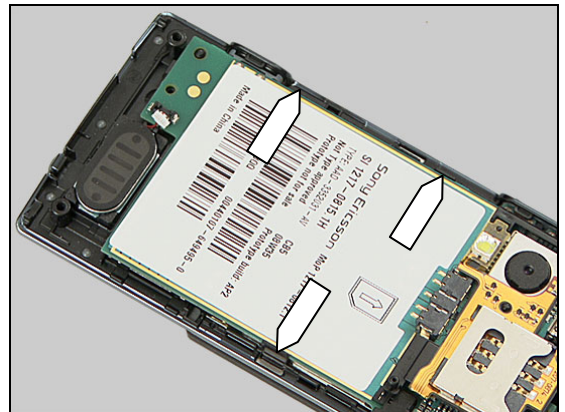
Use the JCIS bit to remove this 2.8 mm black screw.



Open the slider.



There are three snap hooks securing the Main PBA.

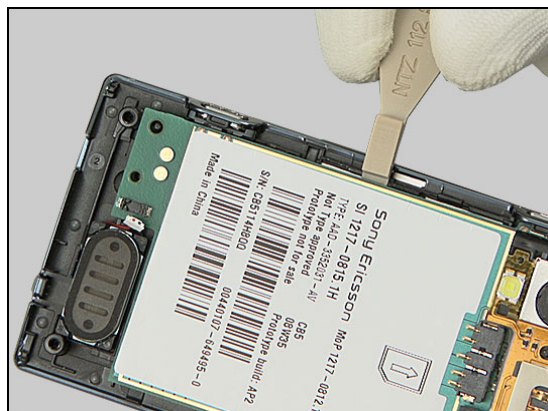


Release the Main PBA from the three hooks by using the Front Opening Tool.  
Start at this position,



## Disassembly

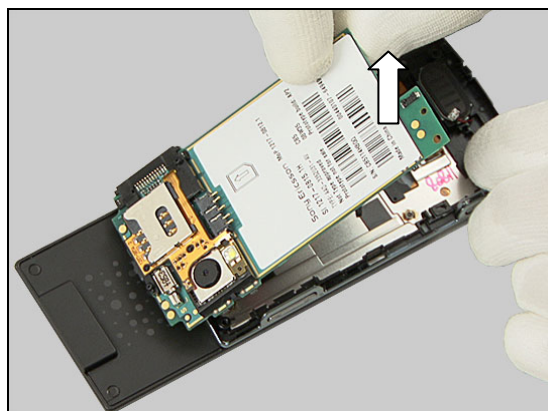
followed by this one,



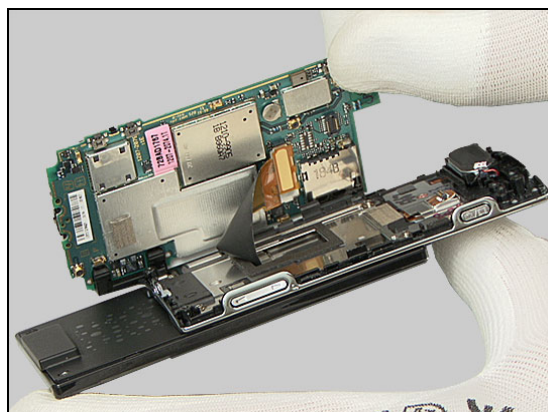
and finally this position.



Raise the bottom of the Main PBA approximately 30° at the bottom,

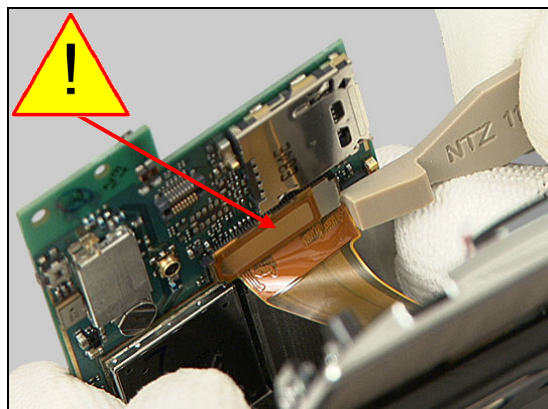


and then gently remove it and place it next to the Slider Unit.

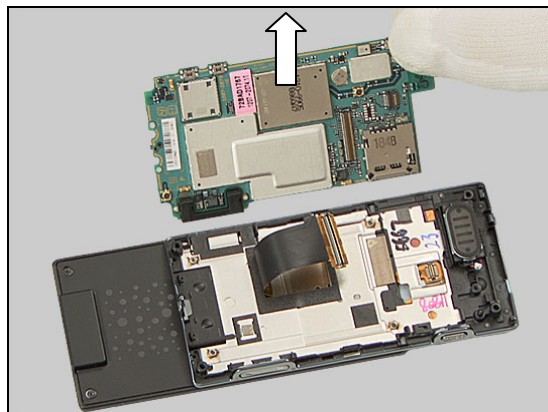


## Disassembly

Use the Front Opening Tool to disconnect the Board-to-Board (BtB) connector.

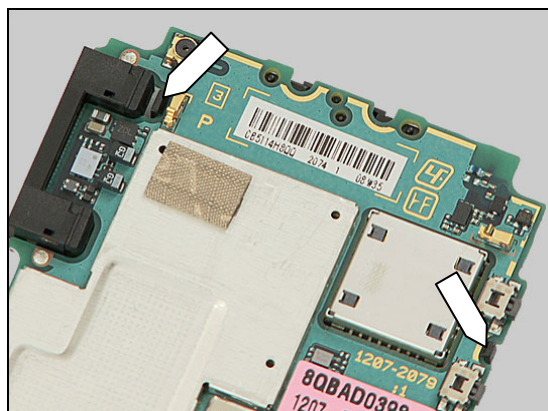


Remove the Main PBA.

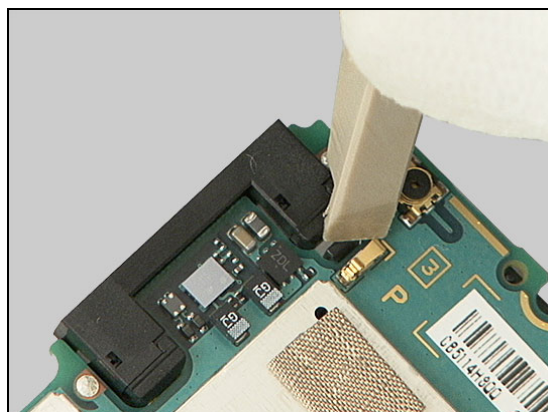


### 3.5 SIM Flex/Carrier Unit

The SIM Flex/Carrier Unit is secured to the Main PBA by two snap hooks.



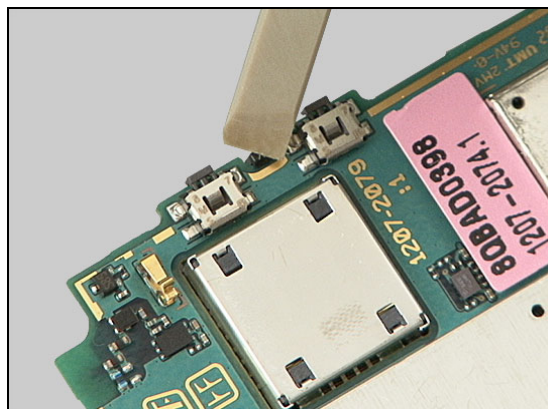
Use the Front Opening Tool to unsnap one hook.



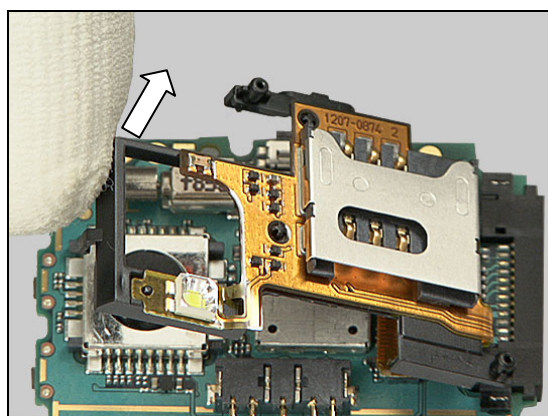


## Disassembly

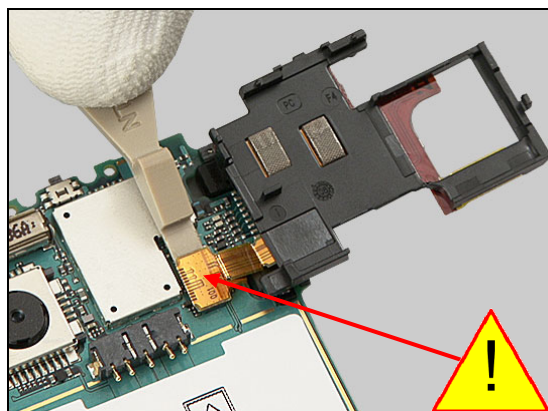
Do the same with the second hook.



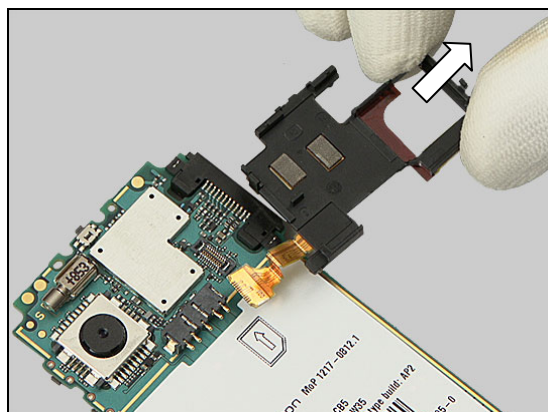
Turn the SIM Flex/Carrier Unit over,



and use the Front Opening Tool to disconnect the BtB connector.



Remove the SIM Flex/Carrier Unit.







## Disassembly

### 3.6 Co-Branding

Close the slider.



Carefully insert the needle type dentist hook underneath the Co-Branding and slide the dentist hook back and forth,



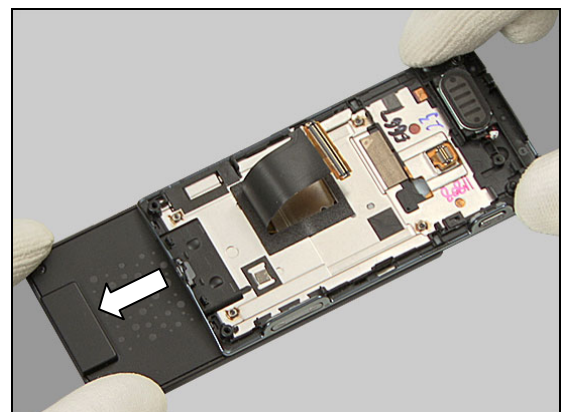
until the Co-Branding is released and can be removed.

**Scrap! Not to be reused!**



### 3.7 Screw Sheets

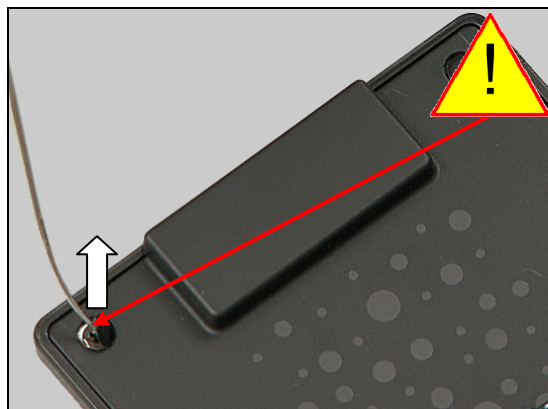
Open the slider.



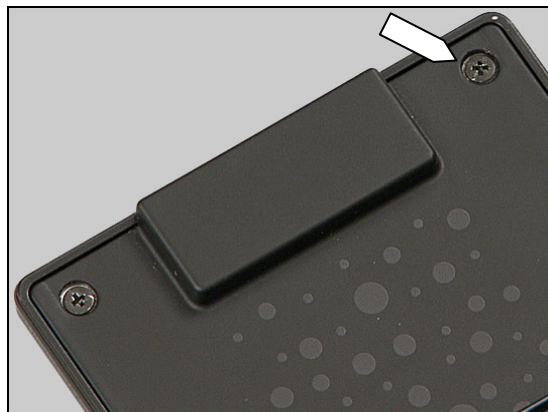
## Disassembly

Carefully insert the dentist hook underneath one of the two Screw Sheets and remove it.

**Scrap! Not to be reused!**



Do the same with the second Screw Sheet.



### 3.8 Front Cover

Remove the two 1.6 mm black screws by using the JCIS bit.



Close the slider.



## Disassembly

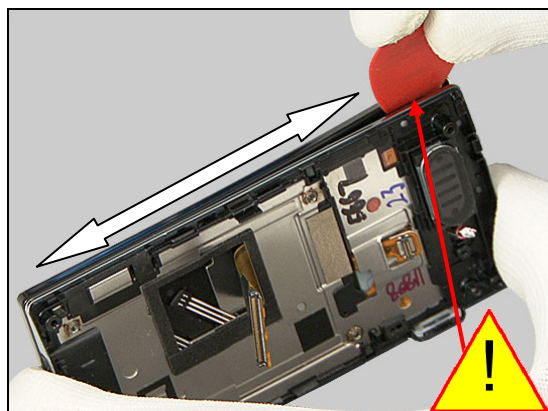
Remove the two 2.3 mm nickel screws by using the JCIS bit.



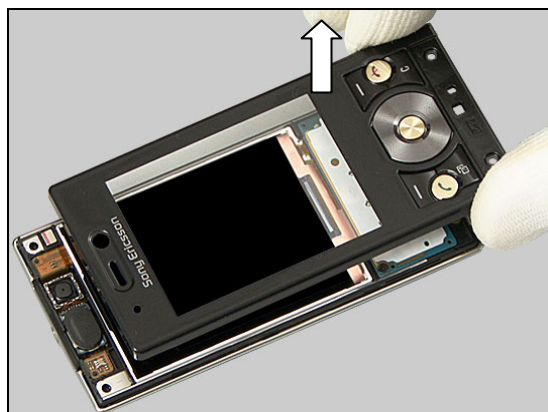
Insert the Plectrum as shown in picture and gently slide back and forth to release this side of the Front Cover.



Do the same on the opposite side.



Lift off the Front Cover.



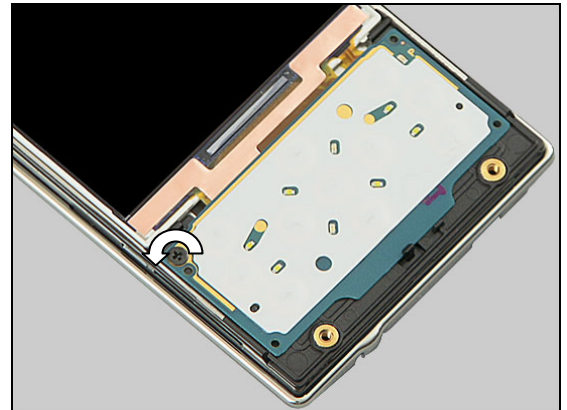




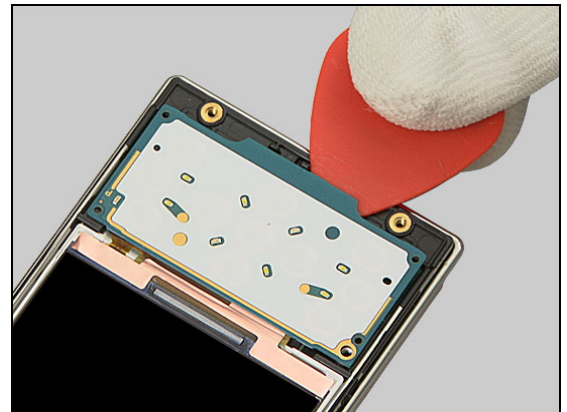
## Disassembly

### 3.9 Navigation Key Unit

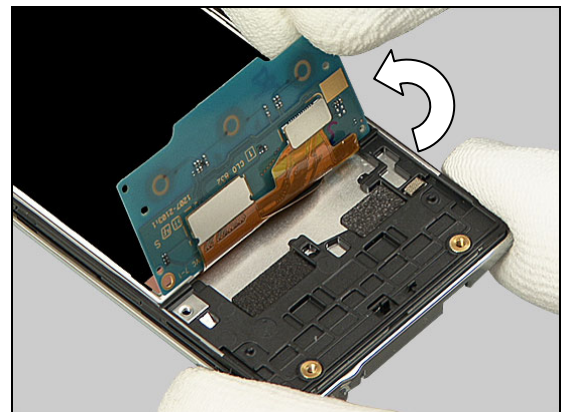
Remove this 1.6 mm black screw by using the JCIS bit.



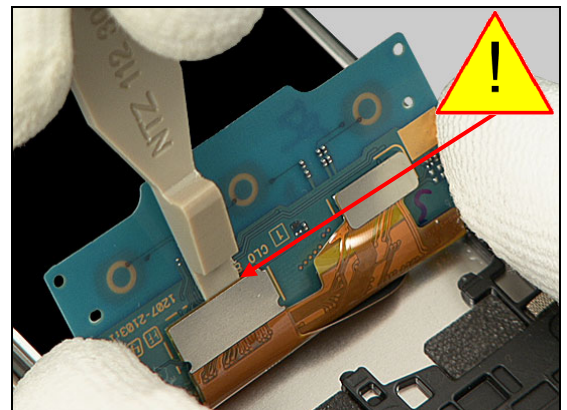
Insert the Plectrum as shown in picture to release the Navigation Key Unit,



and turn it approximately 90°.



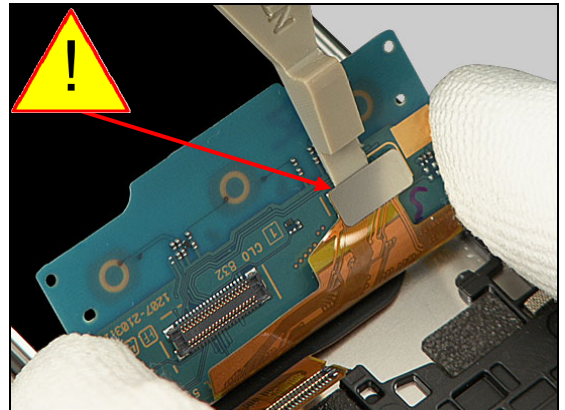
Use the Front Opening Tool to disconnect one of the two BtB connectors.



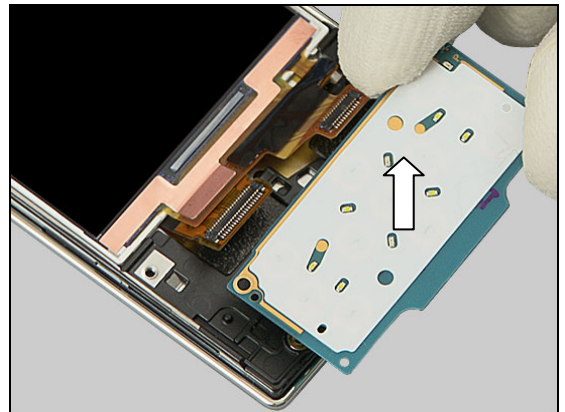


## Disassembly

Do the same with the second BtB connector.

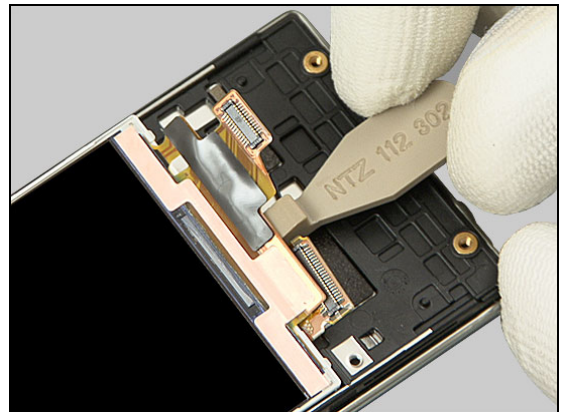


Remove the Navigation Key Unit.

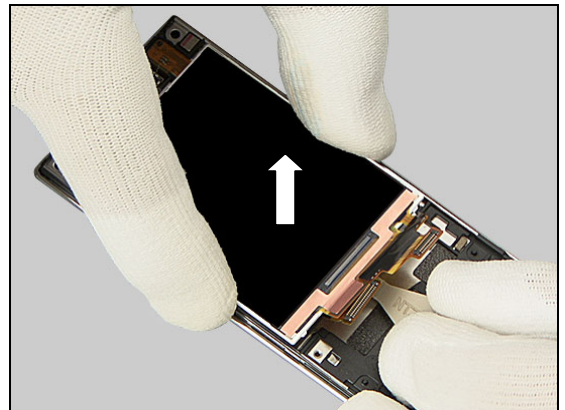


### 3.10 Display

Insert the Front Opening Tool as shown in picture to release and raise the Display.



Remove the Display by lifting straight up.



## 4 Replacement

### 4.1 Battery Cover

*Follow the 3.1 Disassembly instructions!*

Prepare the new Battery Cover.

*Follow the 5.10 Reassembly instructions!*



### 4.2 Rear Cover

*Follow the 3.1 – 3.3 Disassembly instructions!*

Prepare the new Rear Cover.

*Follow the 5.8 – 5.10 Reassembly instructions!*



### 4.3 Co-Branding

*Follow the 3.6 Disassembly instructions!*

Prepare the new Co-Branding.

*Follow the 5.5 Reassembly instructions!*

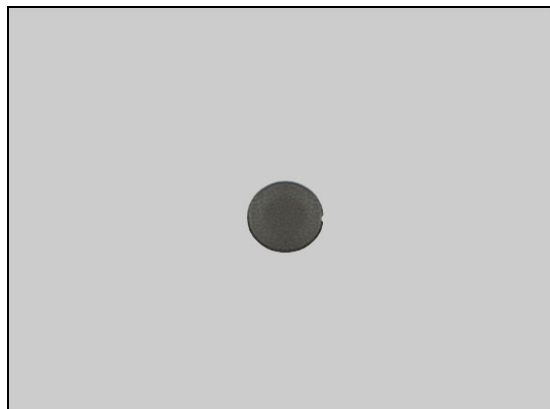


### 4.4 Screw Sheet

*Follow the 3.7 Disassembly instructions!*

Prepare the new Screw Sheets.

*Follow the 5.4 Reassembly instructions!*





## Replacement

### 4.5 Front Cover

*Follow the 3.1 – 3.2 & 3.6 – 3.8 Disassembly instructions!*

Prepare the new Front Cover.

*Follow the 5.3 – 5.5 & 5.9 – 5.10 Reassembly instructions!*

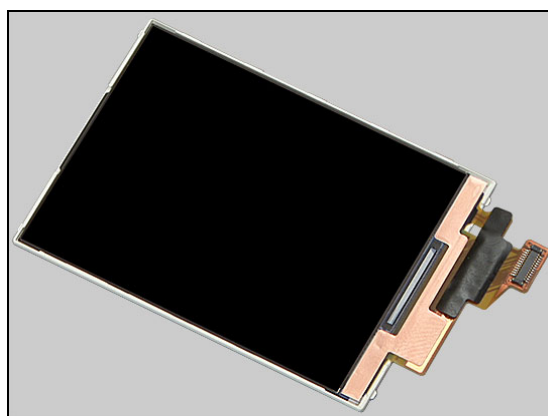


### 4.6 Display

*Follow the 3.1 – 3.2 & 3.6 – 3.10 Disassembly instructions!*

Prepare the new Display.

*Follow the 5.1 – 5.5 & 5.9 – 5.10 Reassembly instructions!*



### 4.7 Hinge Slider

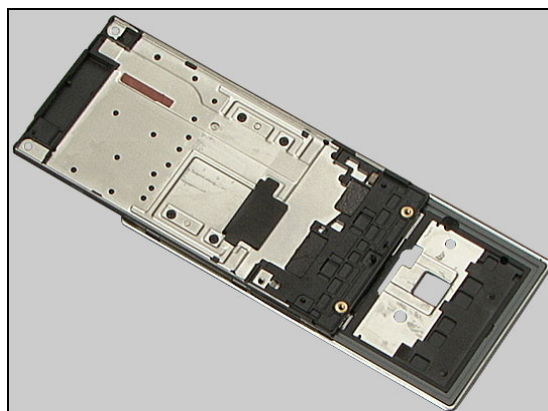
*Follow the 3.1 – 3.4 & 3.6 – 3.10 Disassembly instructions!*

*Follow the 4.12 – 4.15 & 4.26, 4.31 Removal Instructions!*

Prepare the new Hinge Slider.

*Follow the 4.31, 4.29, 4.28, 4.26 & 4.15 – 4.12 Installation Instructions!*

*Follow the 5.1 – 5.5 & 5.7 – 5.10 Reassembly instructions!*





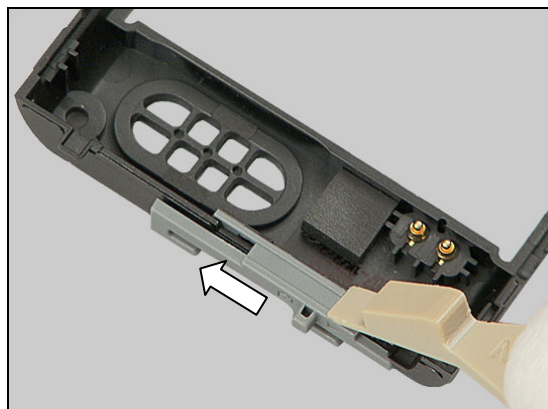
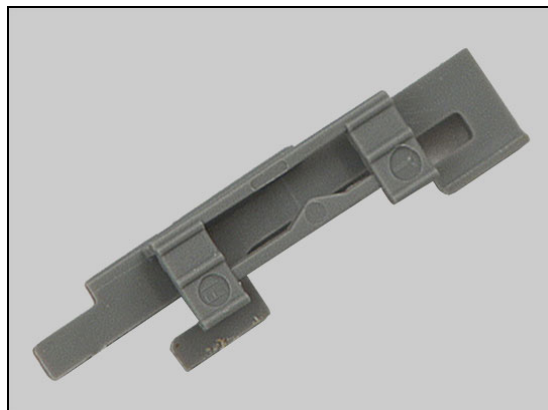
## Replacement

### 4.8 Knob Lock for Battery Cover

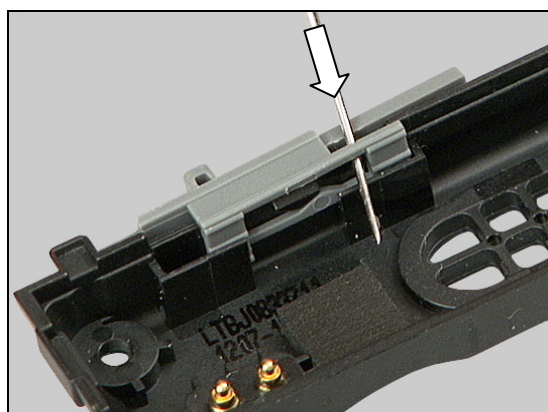
*Follow the 3.1 – 3.3 Disassembly instructions!*  
 Carry out the replacement as described below.  
*Follow the 5.8 – 5.10 Reassembly instructions!*

#### REMOVAL

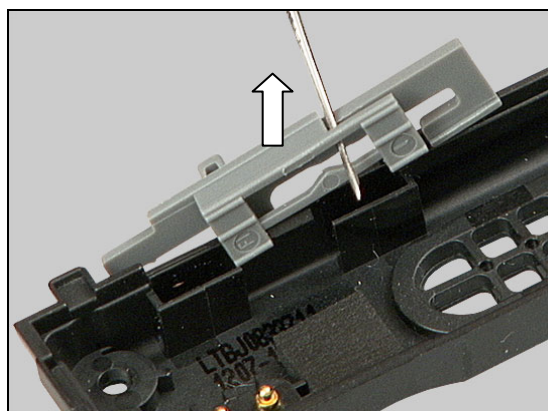
Push the Knob Lock in the direction of the arrow.



Insert the dentist hook as shown in picture.



Pull upwards to release and remove the Knob Lock.





## Replacement: Knob Lock for Battery Cover

### INSTALLATION

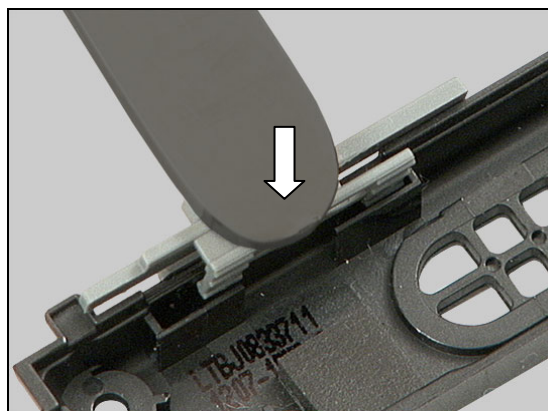
Hold the Knob Lock like this,



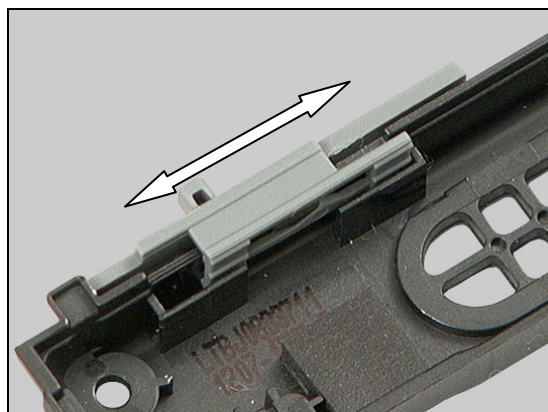
and place it on the Rear Cover as shown in picture.



Press down with the flat end of the tweezers until it snaps into its proper position.



Check that the Knob Lock is properly installed by sliding back and forth.



## Replacement

### 4.9 Water Indicator

#### INSPECTION

To check whether the Water Indicator has been activated (reddish colour), just remove the Battery Cover.

If activated:

*Follow the 3.1 – 3.3 Disassembly instructions!*

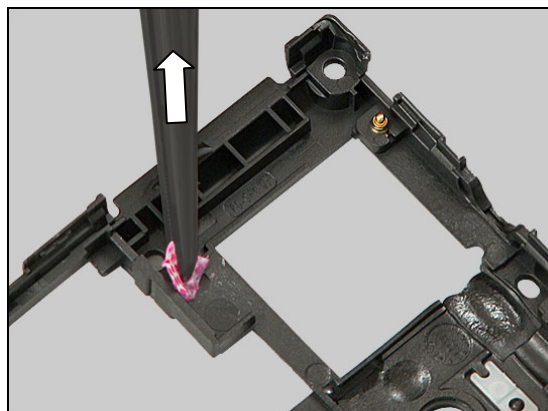
Carry out the replacement as described below.

*Follow the 5.8 – 5.10 Reassembly instructions!*



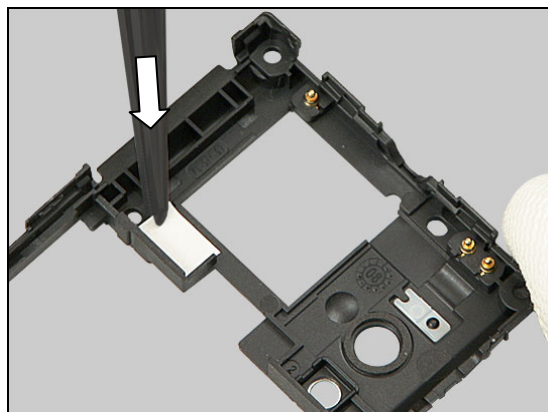
#### REMOVAL

Remove the activated Water Indicator with the dentist hook and the tweezers.



#### INSTALLATION

Attach the new Water Indicator with the tweezers and your fingers.



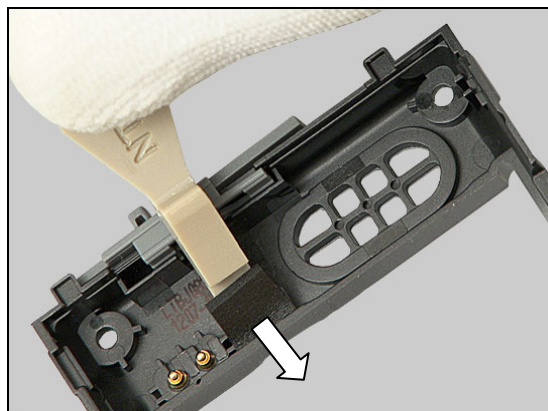
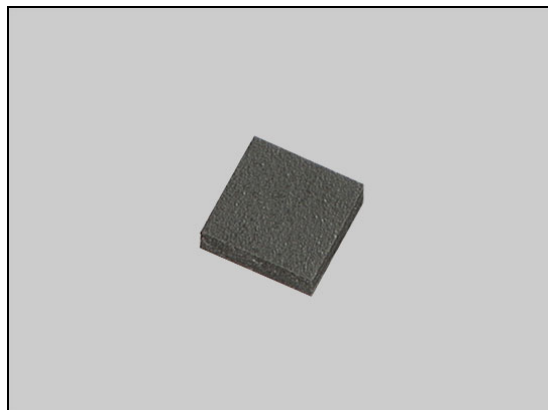
## Replacement

### 4.10 Cushion for Speaker Connector

*Follow the 3.1 – 3.3 Disassembly instructions!*  
 Carry out the replacement as described below.  
*Follow the 5.8 – 5.10 Reassembly instructions!*

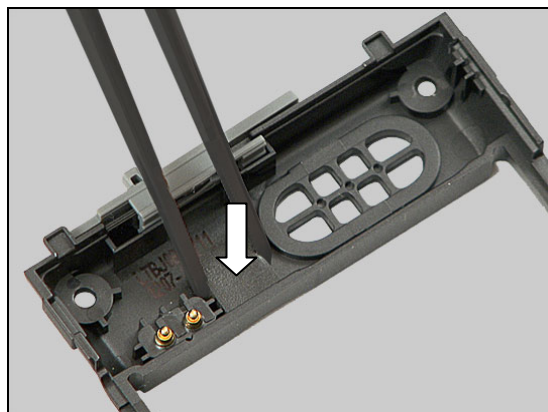
#### REMOVAL

Use the Front Opening Tool to peel off the Cushion from the Rear Cover.



#### INSTALLATION

Place the Cushion in its proper position and press to make it securely attached.



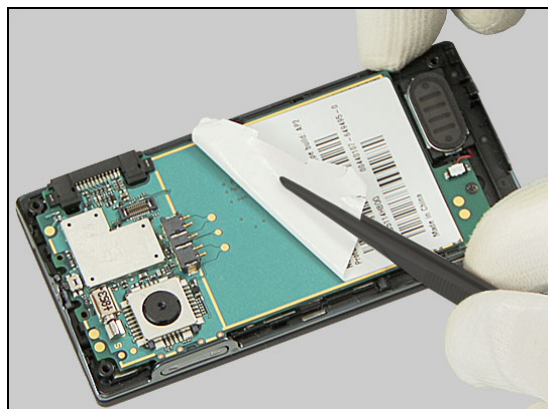
## Replacement

### 4.11 Core Unit Label

*Follow the 3.1 – 3.3 Disassembly instructions!*  
 Carry out the replacement as described below.  
*Follow the 5.8 – 5.10 Reassembly instructions!*

#### REMOVAL

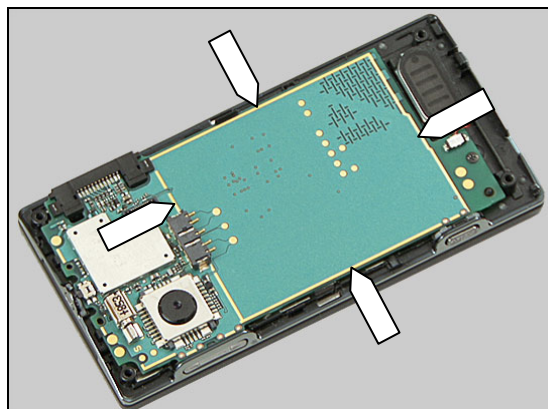
Read the old Core Unit Label and/or write the information into the 'LabelMake' program before removal.  
 Carefully remove the Label by using the tweezers.



#### INSTALLATION

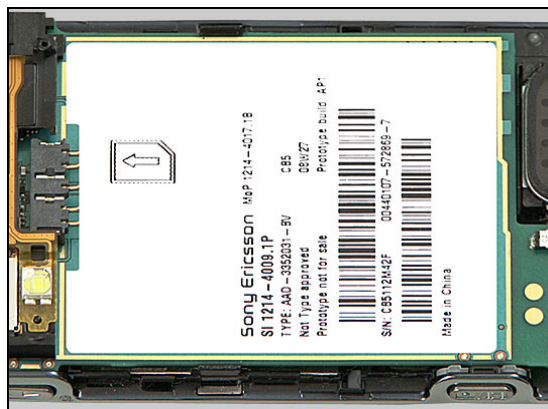
Check that the proper label format is loaded in the Zebra printer and write a new Label by using the 'LabelMake' software.

The Label has to be positioned inside the 'golden' frame as indicated by the pointers.



Place the new Core Unit Label inside the 'golden' frame as shown in the adjacent picture.

**One label only is allowed!**





## Replacement

### 4.12 Loudspeaker

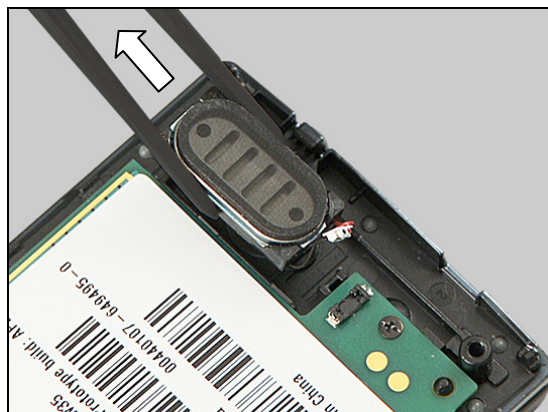
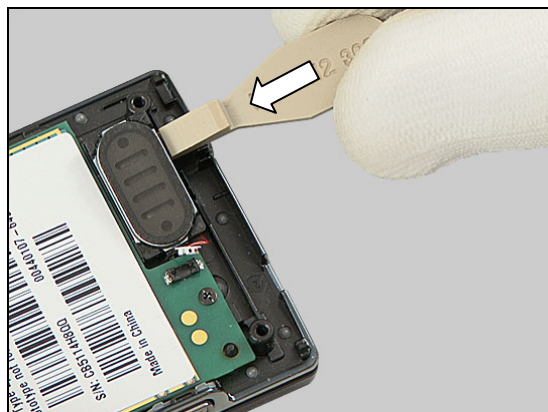
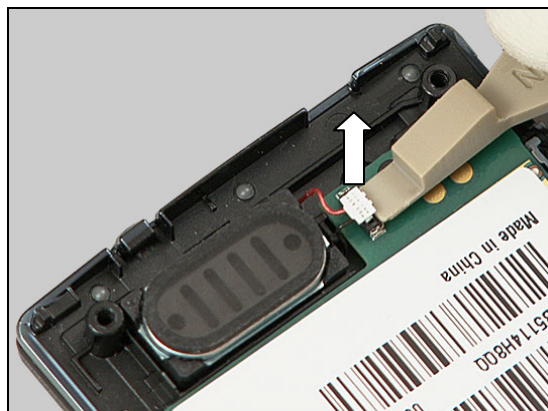
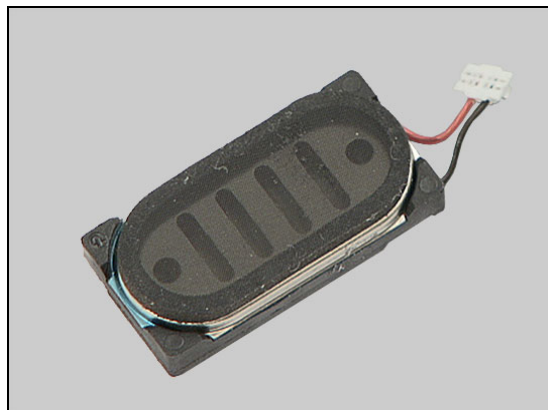
*Follow the 3.1 – 3.3 Disassembly instructions!*  
 Carry out the replacement as described below.  
*Follow the 5.8 – 5.10 Reassembly instructions!*

#### REMOVAL

Insert the Front Opening Tool underneath the connector as shown in picture and pull upwards to disconnect the Loudspeaker from the Main PBA.

Gently insert the Front Opening Tool underneath the Loudspeaker to release it,

and remove it.



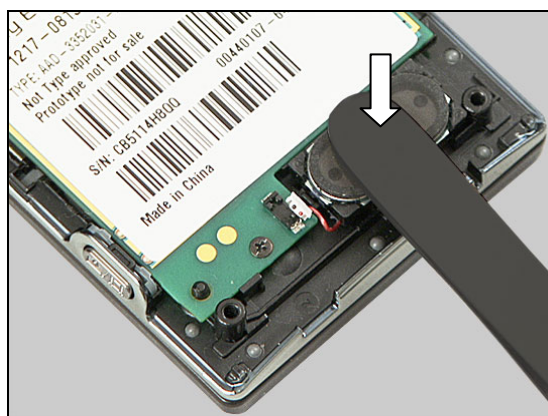
## Replacement: Loudspeaker

### INSTALLATION

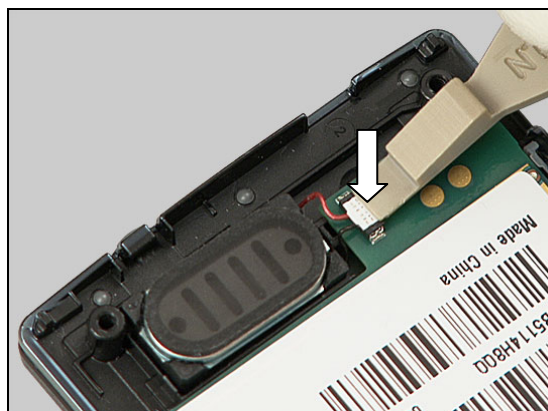
Place the Loudspeaker in its proper position.



Press down with the flat end of the tweezers to make it securely attached.



Connect the Loudspeaker by pressing its connector from the top into the Main PBA connector.



## Replacement

### 4.13 Volume Key

*Follow the 3.1 – 3.4 Disassembly instructions!*  
 Carry out the replacement as described below.  
*Follow the 5.7 – 5.10 Reassembly instructions!*

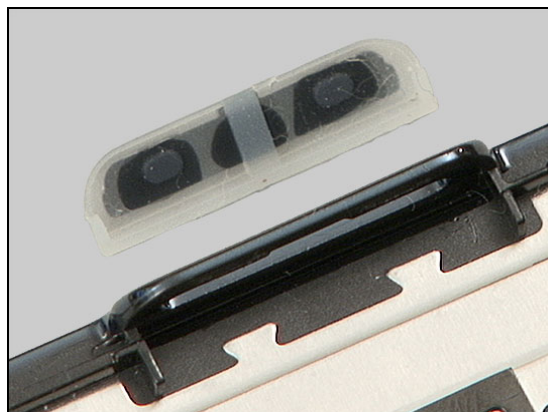
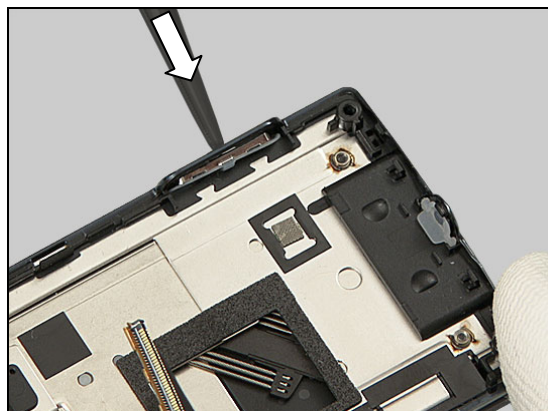
#### REMOVAL

Push with the tweezers on the Volume Key from outside until the key becomes released,

and remove it.

#### INSTALLATION

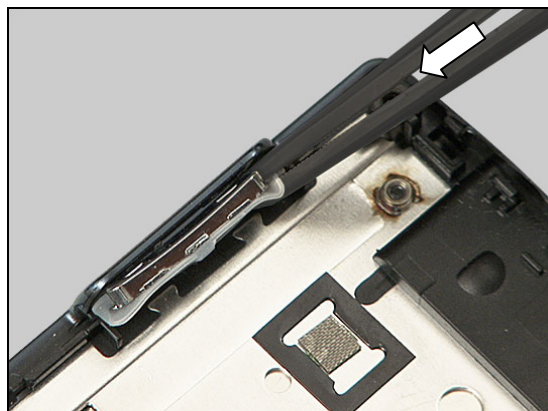
Note the orientation of the Volume Key to be installed.





## Replacement: Volume Key

Place the Volume Key in front of its corresponding hole,



and push by using the tweezers,



until the Volume Key is properly installed as shown from the inside,



and the outside.





## Replacement

### 4.14 Camera Key

*Follow the 3.1 – 3.4 Disassembly instructions!*  
 Carry out the replacement as described below.  
*Follow the 5.7 – 5.10 Reassembly instructions!*

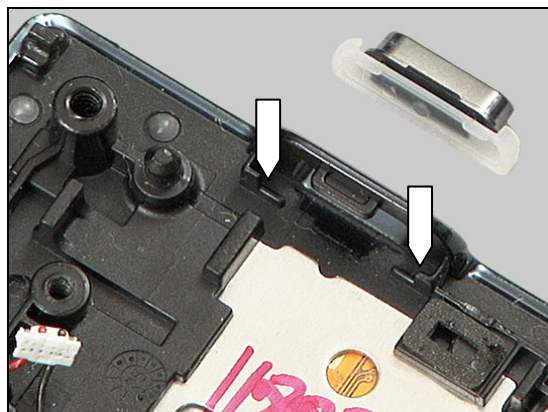
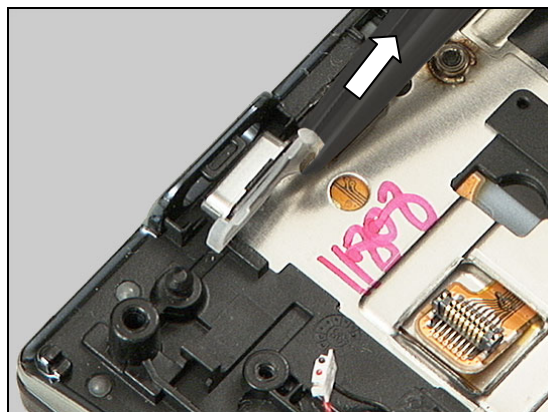
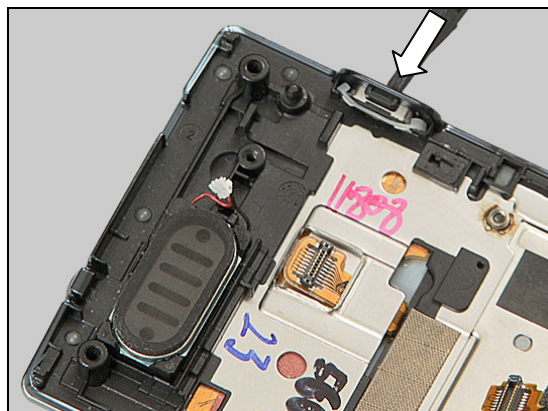
#### REMOVAL

Push with the tweezers on the Camera Key from outside until the key becomes released,

and remove it.

#### INSTALLATION

Note the orientation of the Volume Key to be installed and the pockets where to fit.



## Replacement: Camera Key

Place the ends of the Camera Key,



inside its corresponding pockets, and push by using the tweezers,



until the Volume Key is properly installed as shown from the inside,



and the outside, with the orientation shown in this picture.



## Replacement

### 4.15 Music Key

*Follow the 3.1 – 3.4 Disassembly instructions!*  
 Carry out the replacement as described below.  
*Follow the 5.7 – 5.10 Reassembly instructions!*

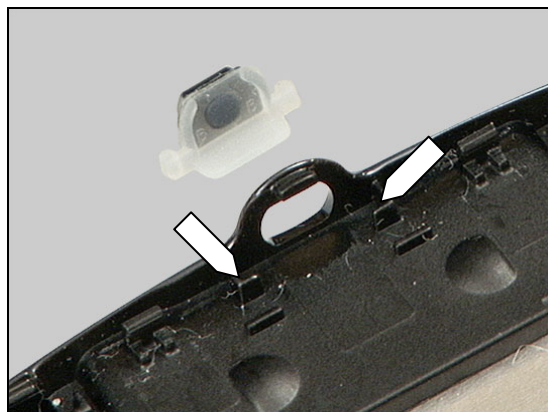
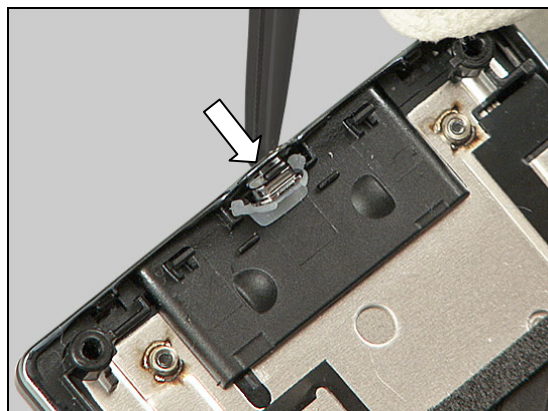
#### REMOVAL

Push with the tweezers on the Music Key from outside until the key becomes released,

and remove it.

#### INSTALLATION

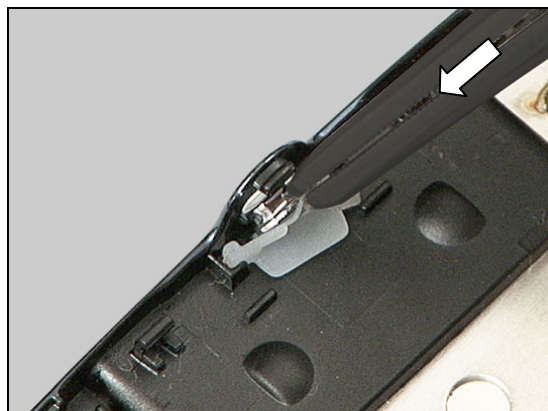
Note the orientation of the Music Key to be installed and the pockets where it will fit.



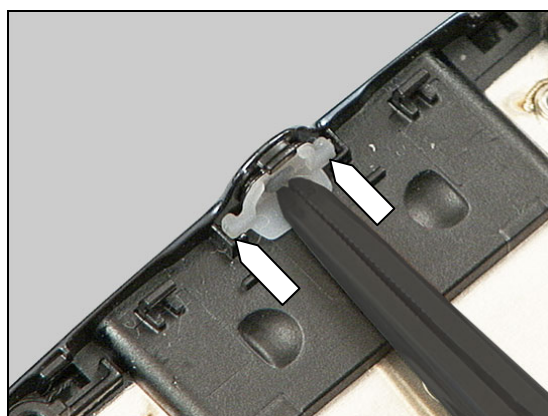


## Replacement: Music Key

Place the ends of the Music Key,



inside its corresponding pockets, and push by using the tweezers,



until the Volume Key is properly installed as shown from the inside,



and the outside.



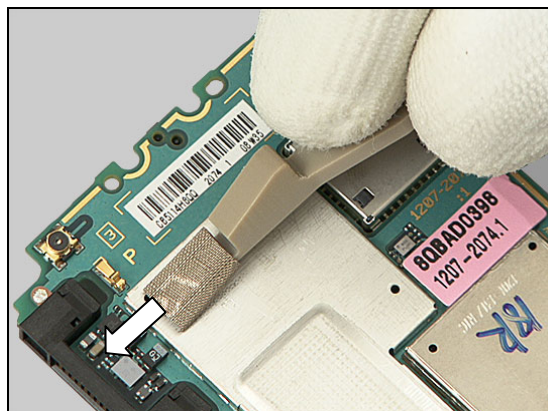
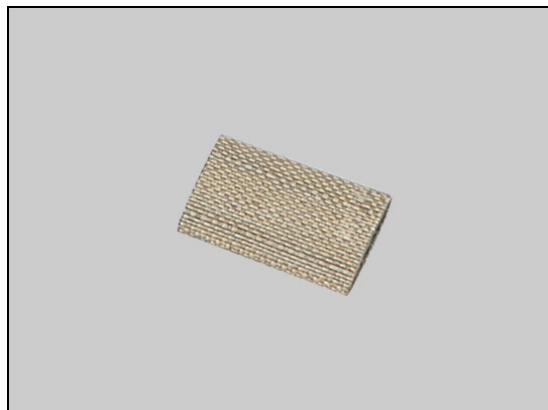
## Replacement

### 4.16 Gasket BB

*Follow the 3.1 – 3.4 Disassembly instructions!*  
 Carry out the replacement as described below.  
*Follow the 5.7 – 5.10 Reassembly instructions!*

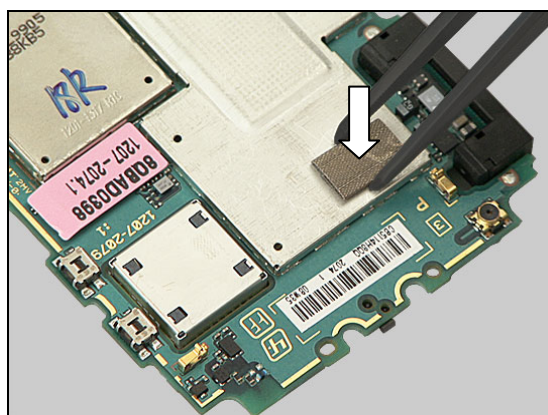
#### REMOVAL

Use the Front Opening Tool to peel off the Gasket from the Main PBA.



#### INSTALLATION

Place the Gasket in its proper position and press to make it securely attached.



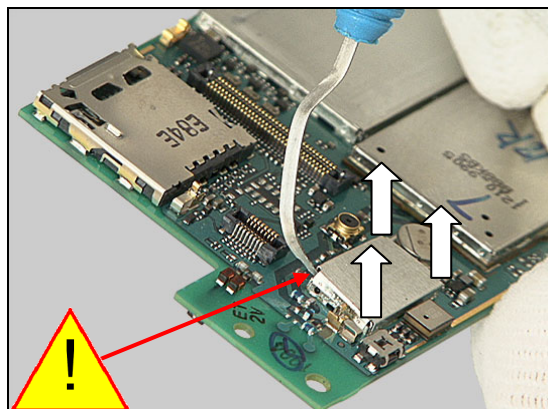
## Replacement

### 4.17 Shield Can Lid AGPS

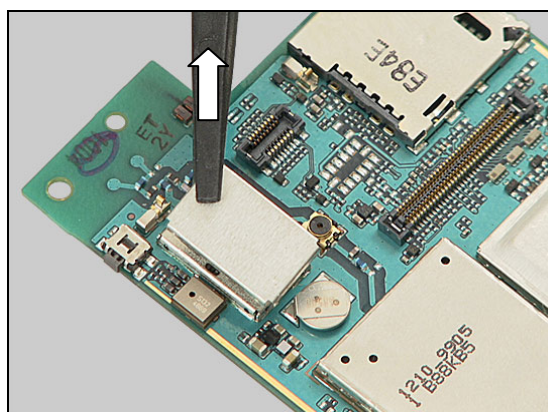
*Follow the 3.1 – 3.4 Disassembly instructions!*  
 Carry out the replacement as described below.  
*Follow the 5.7 – 5.10 Reassembly instructions!*

#### REMOVAL

Insert the dentist hook into the corners of the Shield Can Lid and pull upwards to release it,

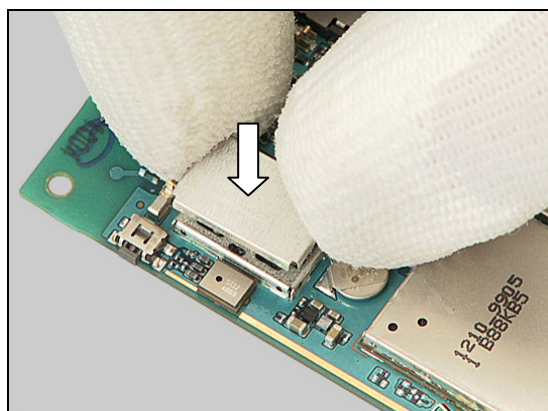


and remove it.



#### INSTALLATION

Place the Shield Can Lid on top of the Shield Fence and press gently until it is securely attached.





## Replacement

### 4.18 Shield Can Lid BB

*Follow the 3.1 – 3.4 Disassembly instructions!*  
 Carry out the replacement as described below.  
*Follow the 5.7 – 5.10 Reassembly instructions!*

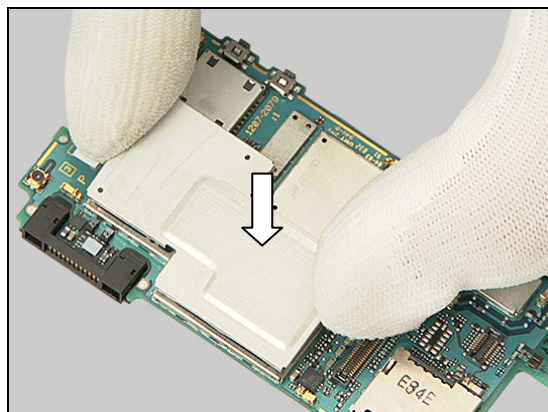
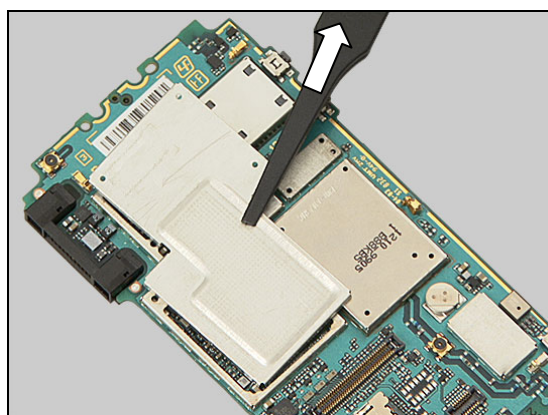
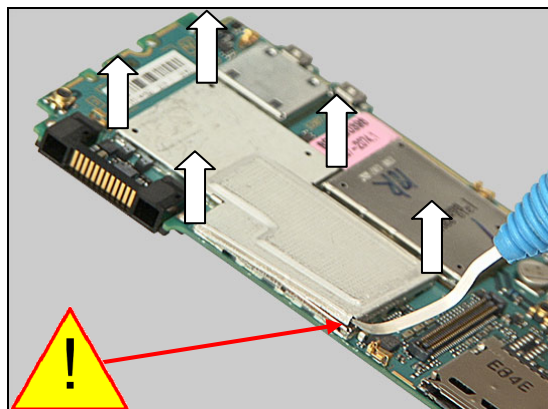
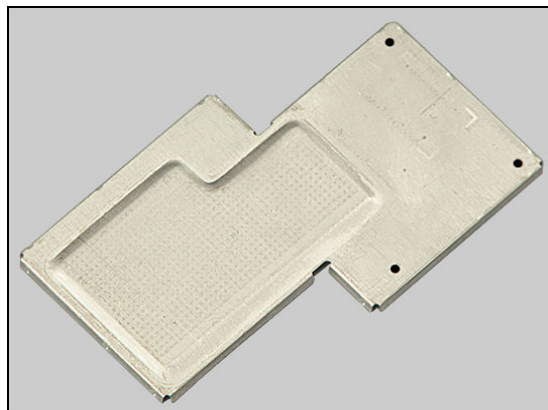
#### REMOVAL

Insert the dentist hook into the corners of the Shield Can Lid and pull upwards to release it,

and remove it.

#### INSTALLATION

Place the Shield Can Lid on top of the Shield Fence and press gently until it is securely attached.



## Replacement

### 4.19 Shield Can Lid W-LAN

*Follow the 3.1 – 3.5 Disassembly instructions!*  
 Carry out the replacement as described below.  
*Follow the 5.6 – 5.10 Reassembly instructions!*

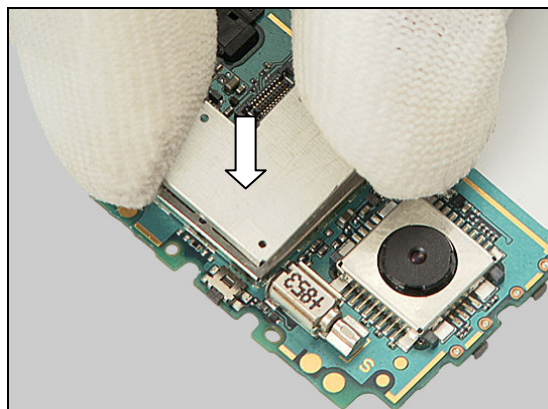
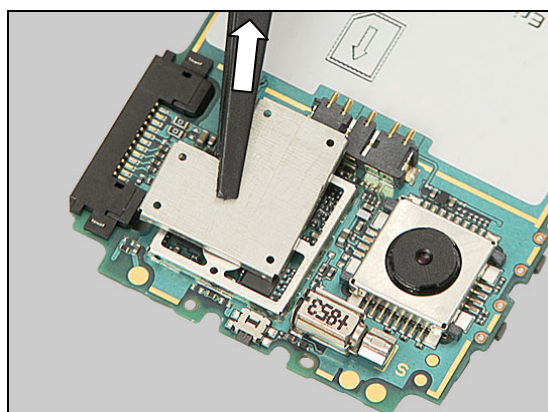
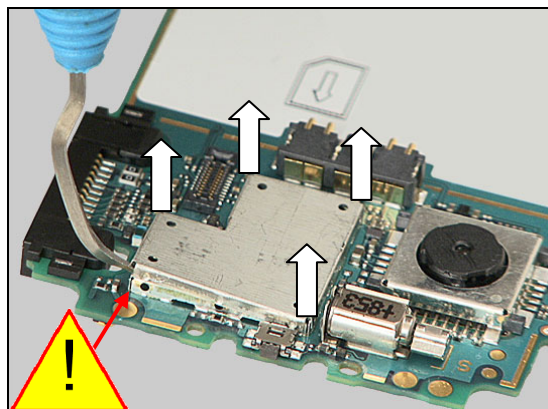
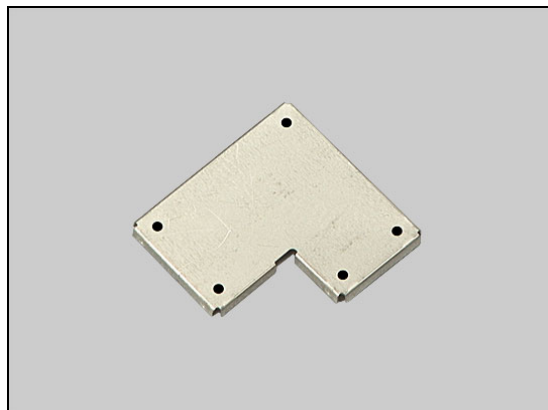
#### REMOVAL

Insert the dentist hook into the corners of the Lid and pull upwards to release it,

and remove it.

#### INSTALLATION

Place the Shield Can Lid on top of the Shield Fence and press gently until it is securely attached.





## Replacement

### 4.20 Shield Can Lid for Camera Socket

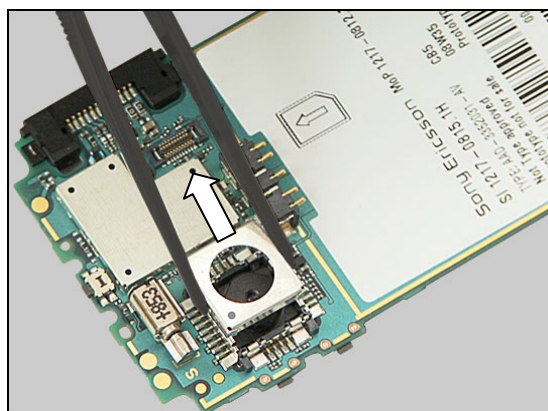
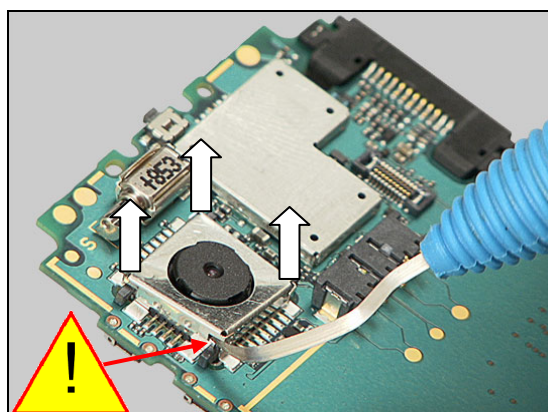
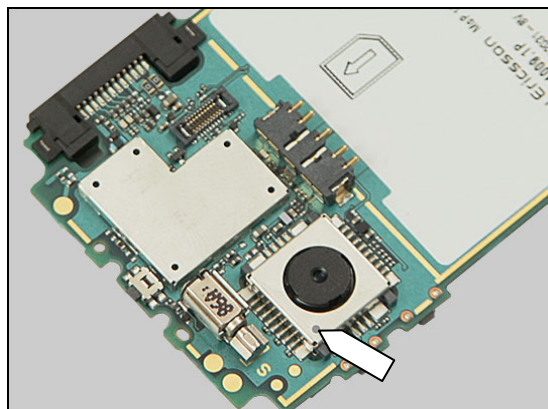
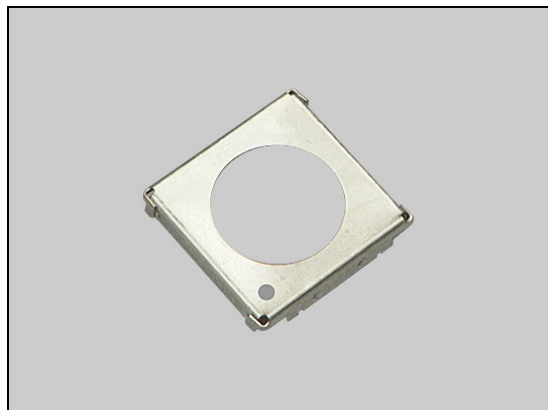
*Follow the 3.1 – 3.5 Disassembly instructions!*  
 Carry out the replacement as described below.  
*Follow the 5.6 – 5.10 Reassembly instructions!*

#### REMOVAL

Note the position of this mark on the Shield Can Lid.

Insert the dentist hook into the corners of the Lid to release it,

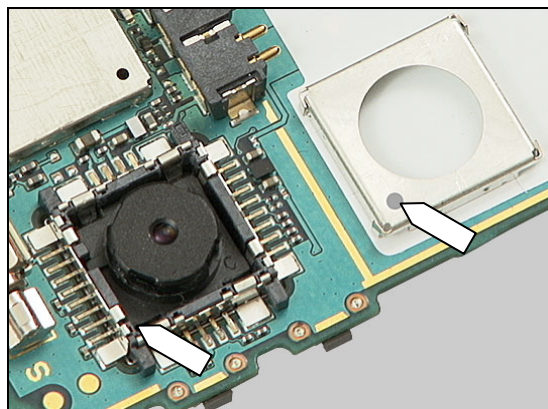
and then remove it.



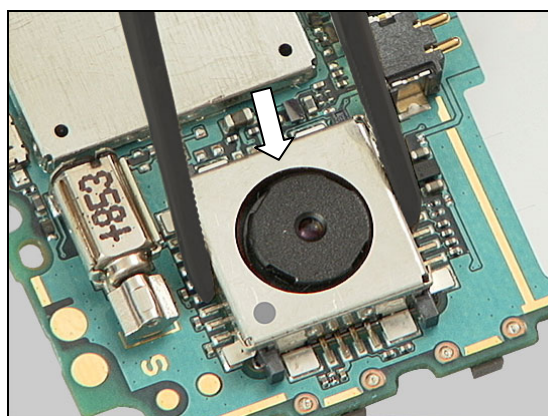
## Replacement: Shield Can Lid for Camera Socket

### INSTALLATION

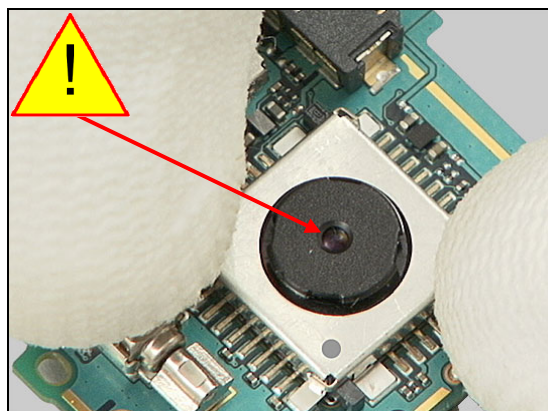
The Shield Can Lid is installed so that the mark of the lid becomes located in the corner of the camera socket as indicated by the pointers.



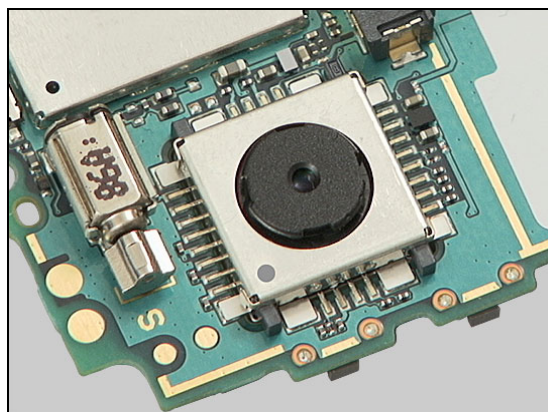
Place the Lid on top and in level with the camera,



and press with your fingers without touching the camera lens,



to secure the lid to the camera socket.



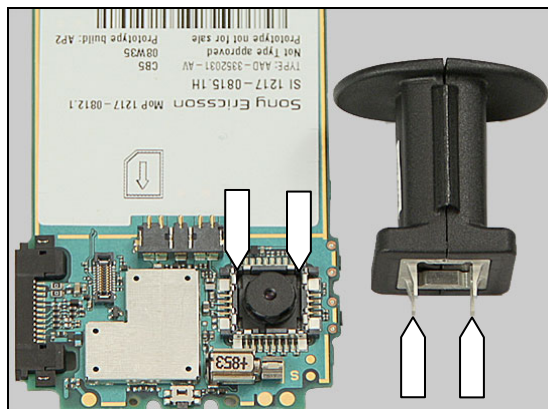
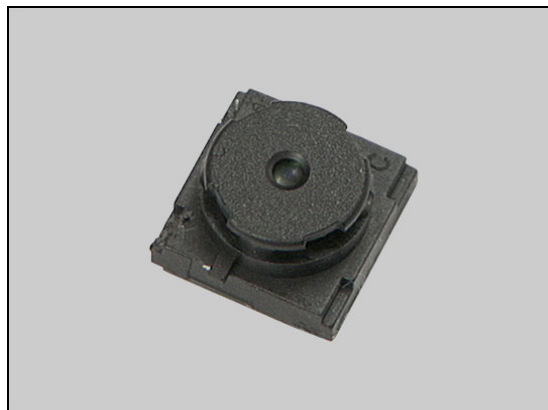
## Replacement

### 4.21 Camera - Rear

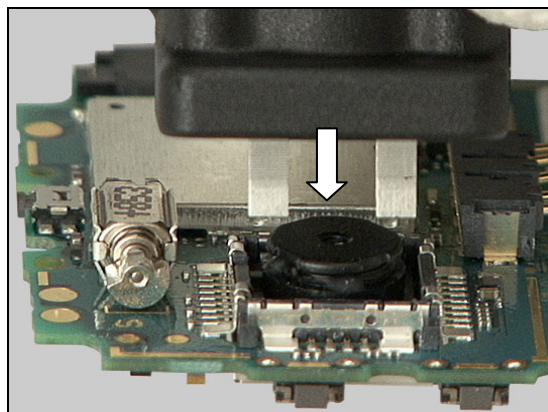
*Follow the 3.1 – 3.5 Disassembly instructions!*  
*Follow the 4.20 Removal instructions!*  
 Carry out the replacement as described below.  
*Follow the 4.20 Installation instructions!*  
*Follow the 5.6 – 5.10 Reassembly instructions!*

#### REMOVAL

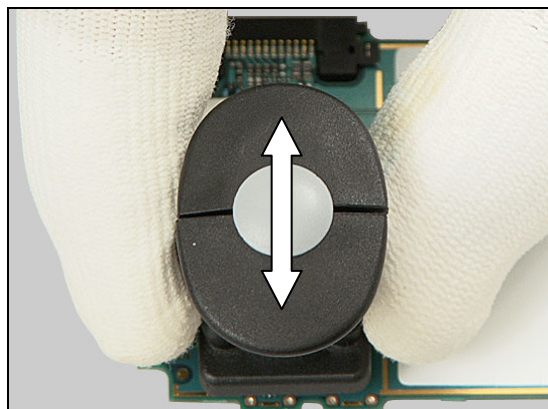
**Note the orientation of the blades on the Camera Removal Tool in relation to the position of the camera socket!**



Insert the tool all the way into the camera socket with the Camera Removal Tool in the position shown in the picture.



Wag the tool, as indicated by the double arrow, to release the Camera from its socket,

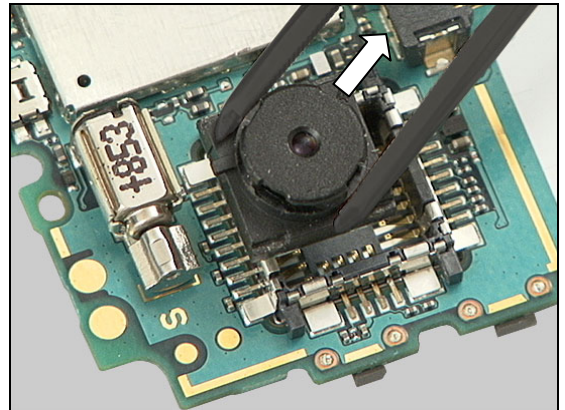






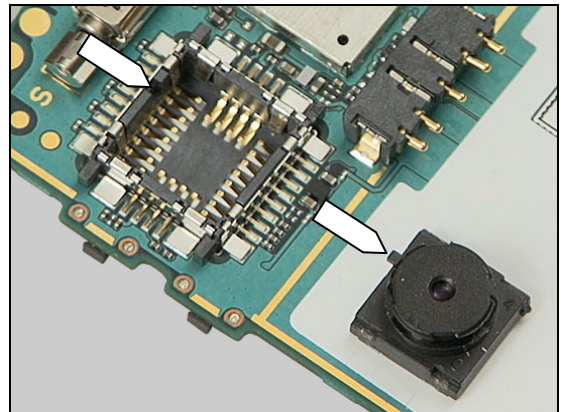
## Replacement: Camera - Rear

so that it can be removed.

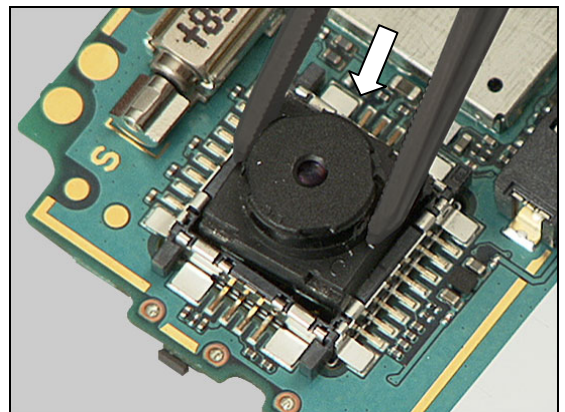


### INSTALLATION

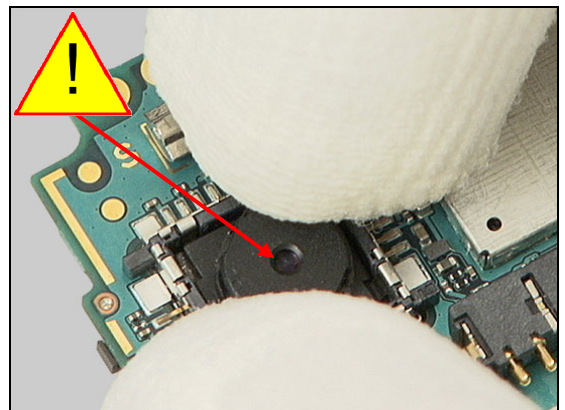
**Note the keying, camera – socket!**



Place the camera inside and in level with the socket,



and press with your fingers, without touching the camera lens, to the bottom of the socket.





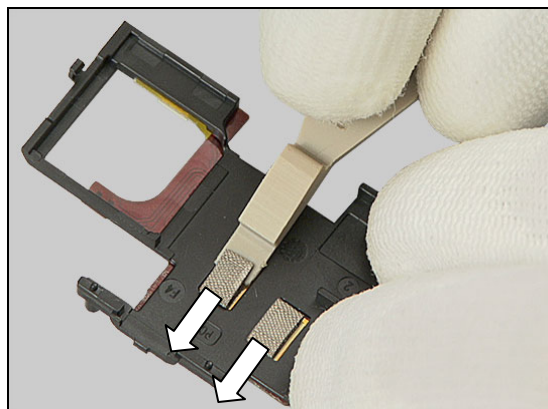
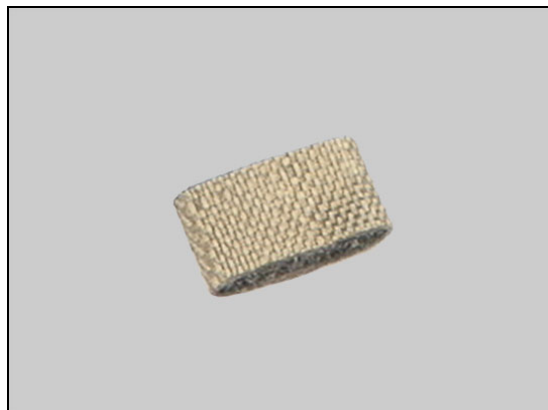
## Replacement

### 4.22 Gasket SIM

*Follow the 3.1 – 3.5 Disassembly instructions!*  
 Carry out the replacement as described below.  
*Follow the 5.6 – 5.10 Reassembly instructions!*

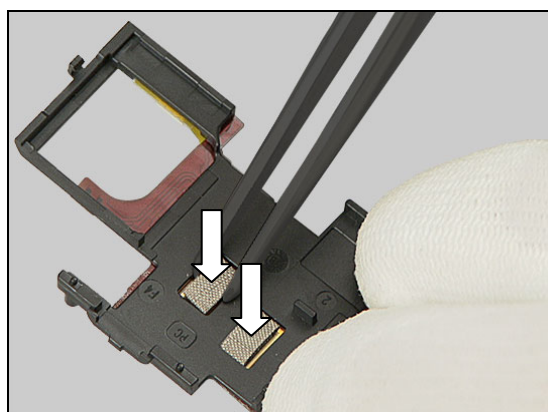
#### REMOVAL

Use the Front Opening Tool to peel off one or both Gaskets from the SIM Flex/Carrier Unit.



#### INSTALLATION

Place the Gaskets in their proper positions and press to make them securely attached.



## Replacement

### 4.23 SIM Flex Module

*Follow the 3.1 – 3.5 Disassembly instructions!*  
 Carry out the replacement as described below.  
*Follow the 5.6 – 5.10 Reassembly instructions!*

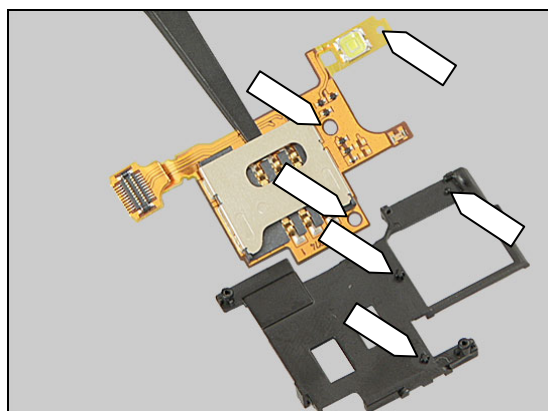
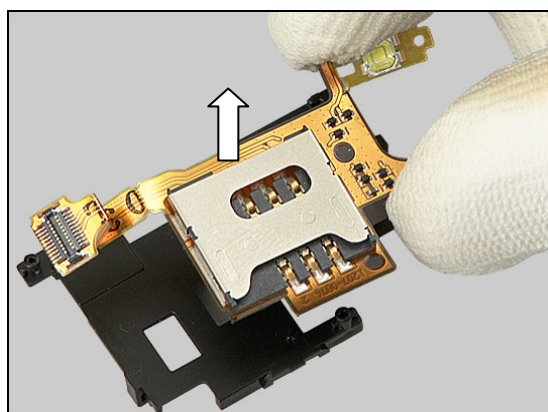
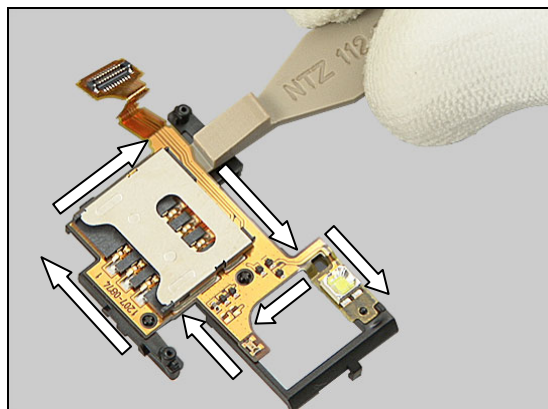
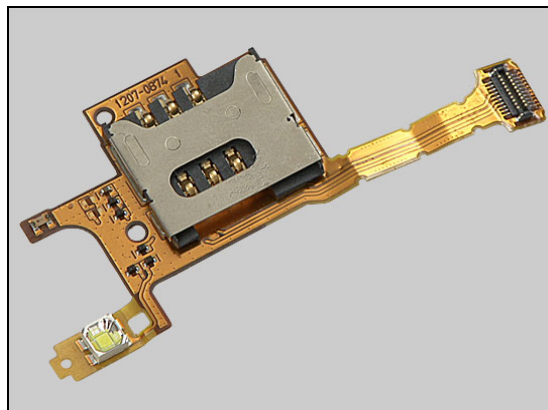
#### REMOVAL

Insert the Front Opening Tool or Plectrum between the SIM Flex Module and the Carrier as shown in picture and slide all around the module,

until it becomes released and can be removed.

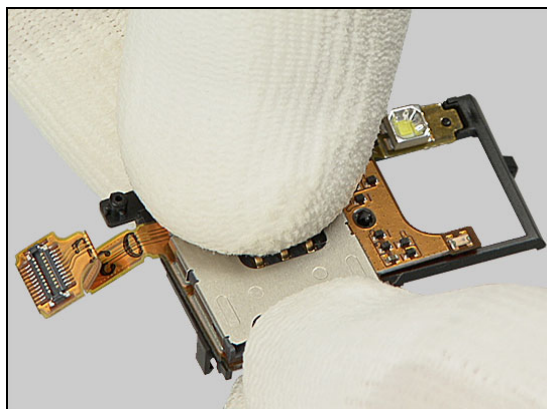
#### INSTALLATION

Place the SIM Flex Module on top of the Carrier in accordance with the guiding pegs and holes shown in the picture.

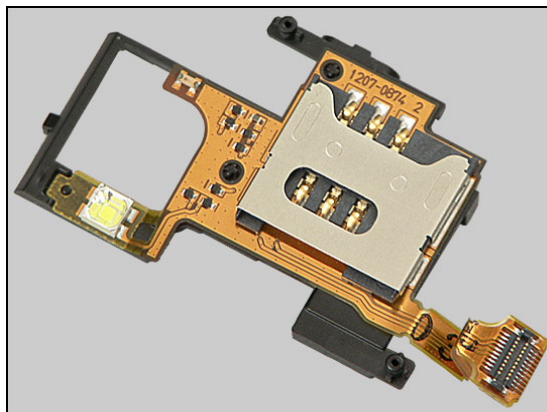


## Replacement: SIM Flex Module

Press with your fingers along the surface of the SIM Flex Module,



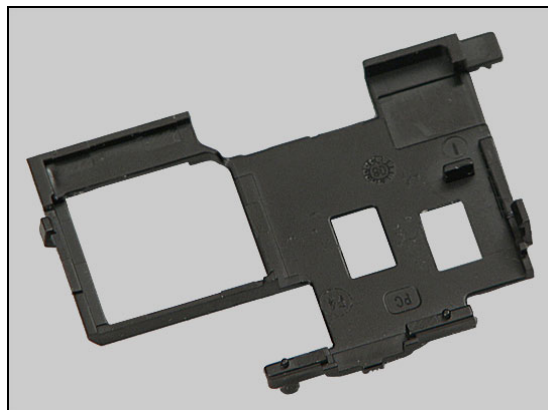
until it is securely attached to the Carrier.



## Replacement

### 4.24 Carrier for SIM Holder

*Follow the 3.1 – 3.5 Disassembly instructions!*  
*Follow the 4.23 Removal instructions!*  
*Follow the 4.23 Installation instructions!*  
*Follow the 5.6 – 5.10 Reassembly instructions!*





## Replacement

### 4.25 Navigation Keypad

*Follow the 3.1 – 3.2 & 3.6 – 3.8 Disassembly instructions!*

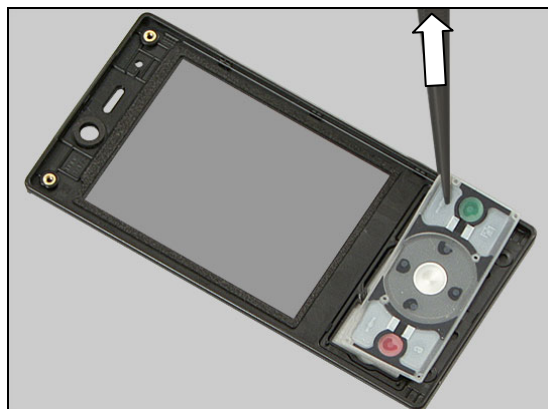
Carry out the replacement as described below.

*Follow the 5.3 – 5.5 & 5.9 – 5.10 Reassembly instructions!*



#### REMOVAL

Turn the Front Cover upside/down and remove the Navigation Keypad.



#### INSTALLATION

Place the Navigation Keypad in the cavity of the Front Cover with the red and green buttons as shown in picture.





## Replacement

### 4.26 Magnet

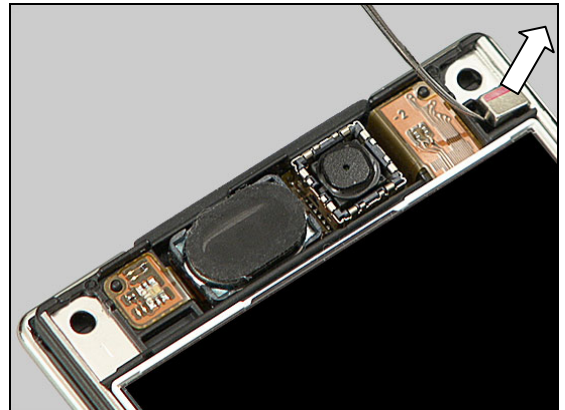
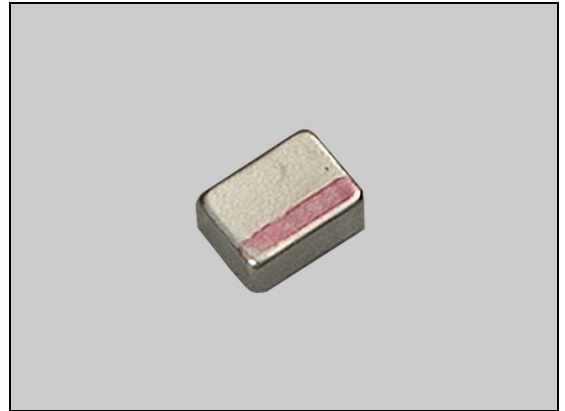
*Follow the 3.1 – 3.2 & 3.6 – 3.8 Disassembly instructions!*

Carry out the replacement as described below.

*Follow the 5.3 – 5.5 & 5.9 – 5.10 Reassembly instructions!*

#### REMOVAL

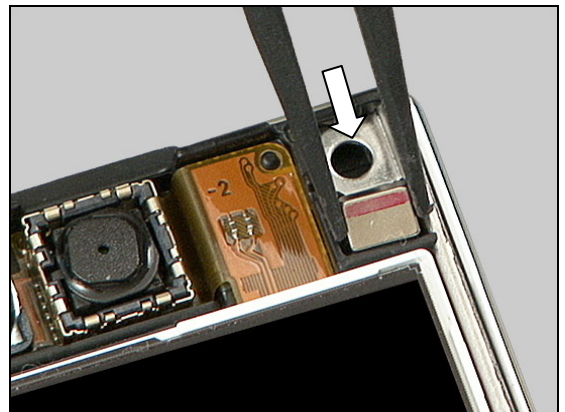
Use the dentist hook to remove the Magnet from its cavity.



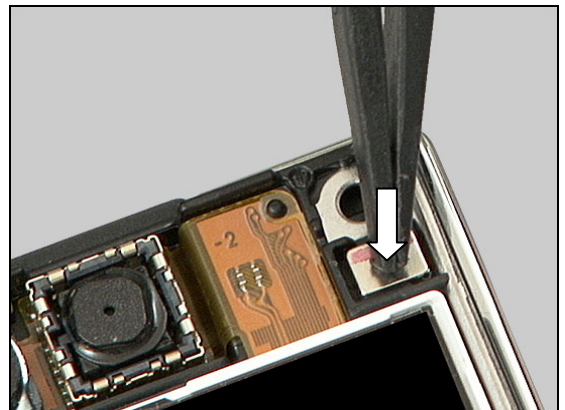
#### INSTALLATION

**Note! Red stripe towards the top of the phone!**

Use non-metallic tweezers to place the Magnet into its cavity,



and press on top to secure its position.



## Replacement

### 4.27 Dome Sheet

*Follow the 3.1 – 3.2 & 3.6 – 3.8 Disassembly instructions!*

Carry out the replacement as described below.

*Follow the 5.3 – 5.5 & 5.9 – 5.10 Reassembly instructions!*

#### REMOVAL

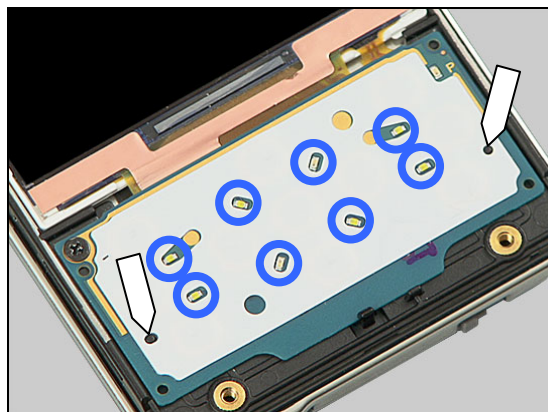
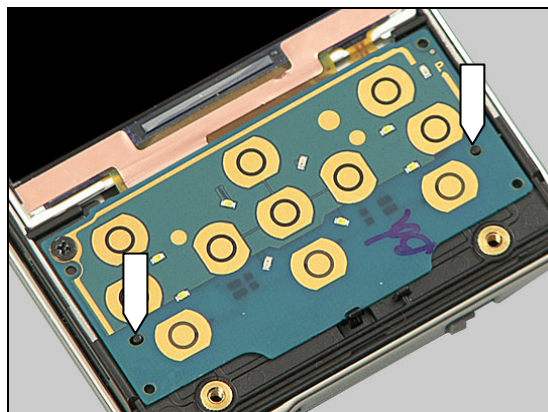
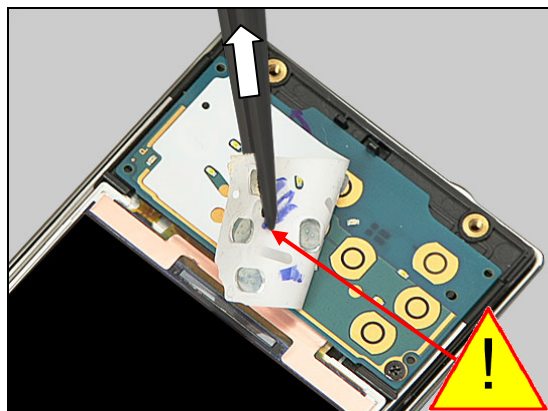
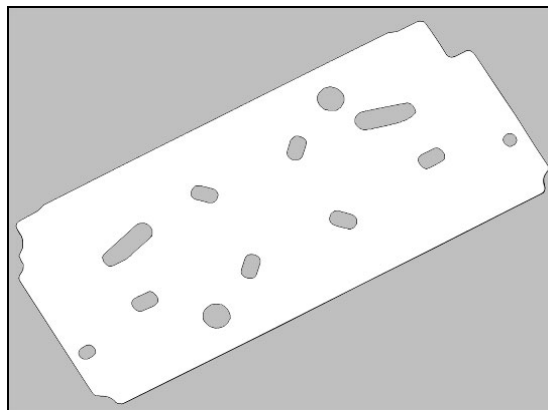
Carefully peel off the Dome Sheet from the Navigation Key PBA.

**Scrap! Not to be reused!**

#### INSTALLATION

Use these two pegs as alignment for the corresponding holes of the Dome Sheet during installation.

Attach the Dome Sheet and verify that the two holes are properly aligned with the pegs as described above and that the eight LEDs can emit light through the holes of the Dome Sheet (as indicated by the blue circles).



## Replacement

### 4.28 Keyboard

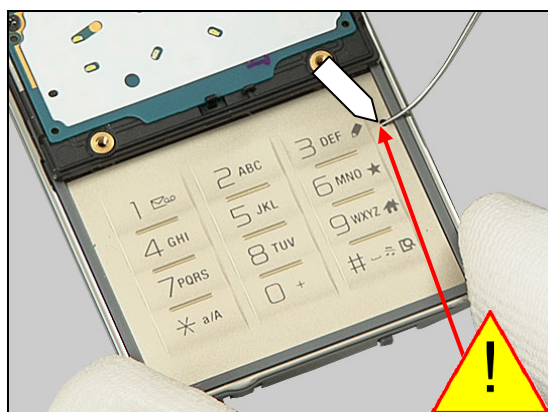
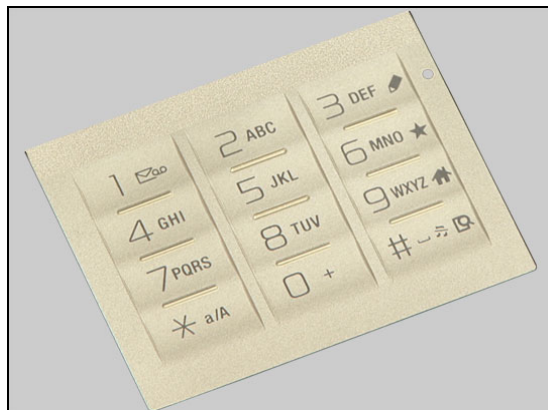
*Follow the 3.1 – 3.2 & 3.6 – 3.8 Disassembly instructions!*

Carry out the replacement as described below.

*Follow the 5.3 – 5.5 & 5.9 – 5.10 Reassembly instructions!*

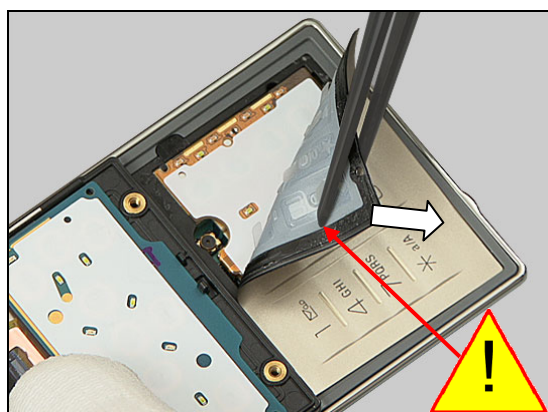
#### REMOVAL

Carefully insert the dentist hook through this hole to release the Keyboard in this corner



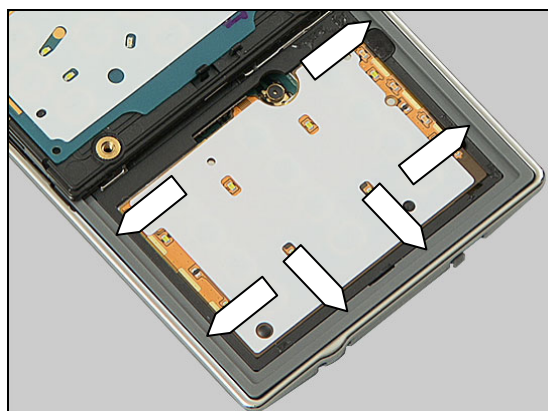
Gently peel the Keyboard off the Key Flex Module by using the tweezers.

**Scrap! Not to be reused!**



#### INSTALLATION

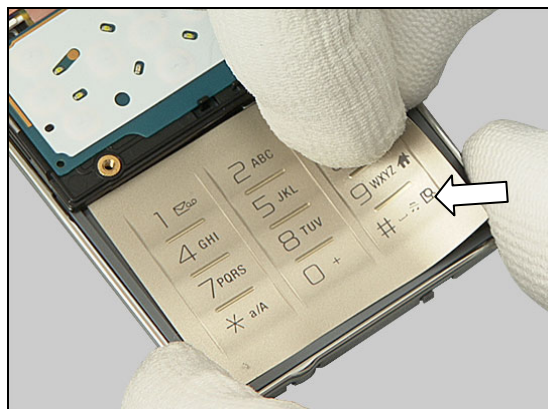
The Keyboard to be installed should be placed against the borders as indicated by the pointers.



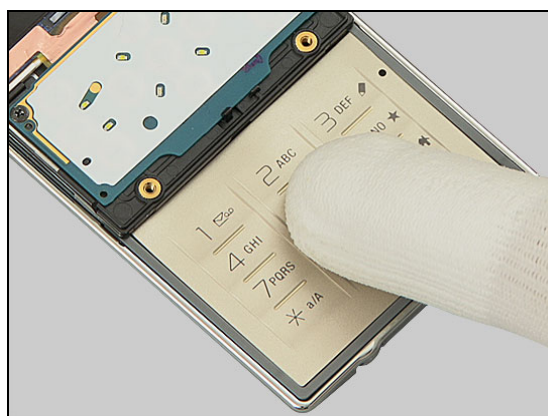


## Replacement: Keyboard

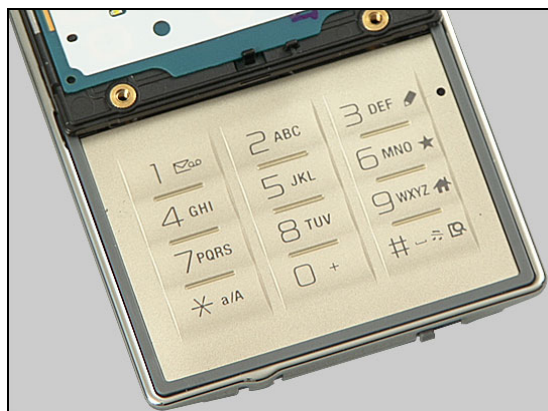
Place the Keyboard against the borders,



and press with your fingers,



to make it securely attached to the Key Flex Module.



## Replacement

### 4.29 Key Flex Module

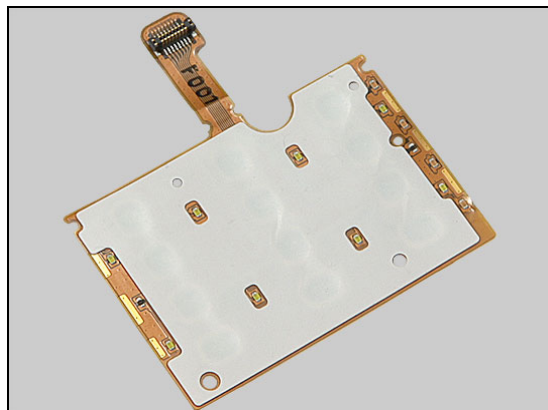
*Follow the 3.1 – 3.4 & 3.6 – 3.8 Disassembly instructions!*

*Follow the 4.28 Removal instructions!*

Carry out the replacement as described below.

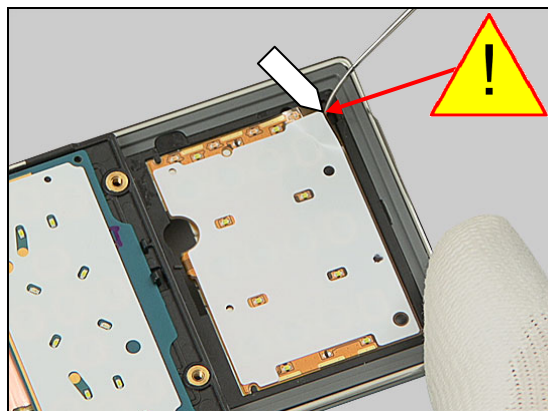
*Follow the 4.28 Installation instructions!*

*Follow the 5.3 – 5.5 & 5.7 – 5.10 Reassembly instructions!*



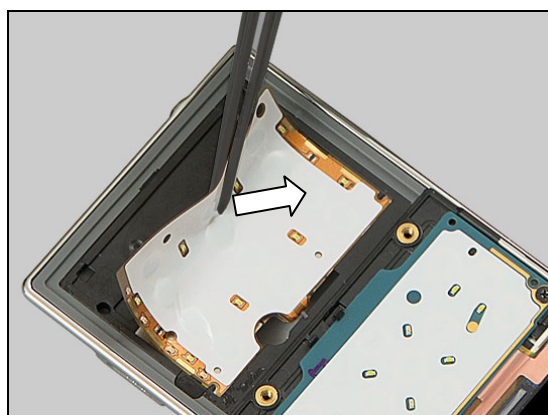
#### REMOVAL

Carefully insert the dentist hook in this corner to release the Key Flex Module from the Slider Unit.



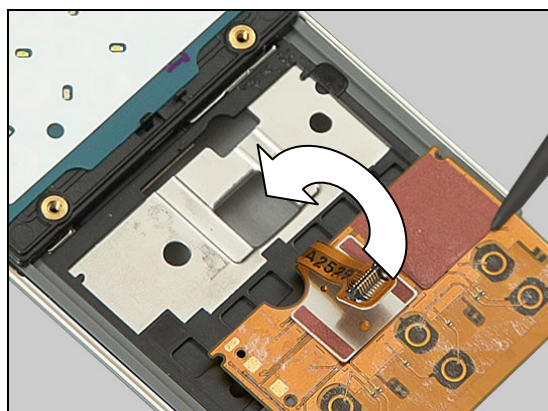
Peel off the Key Flex Module by using the tweezers.

**Scrap! Not to be reused!**



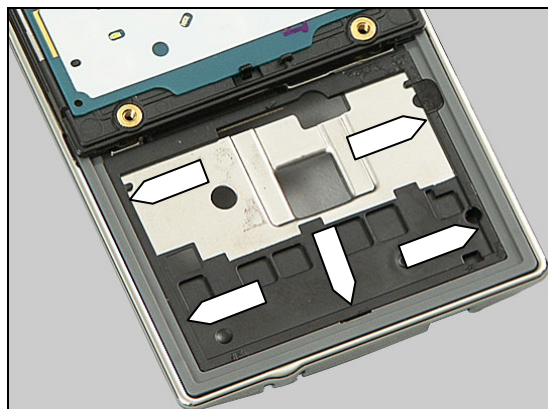
#### INSTALLATION

The back side of the Key Flex Module includes a BtB connector that must pass through the square shaped hole for connection to the Main PBA.

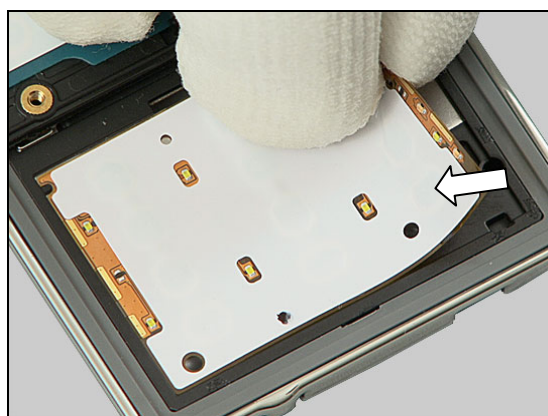


## Replacement: Key Flex Module

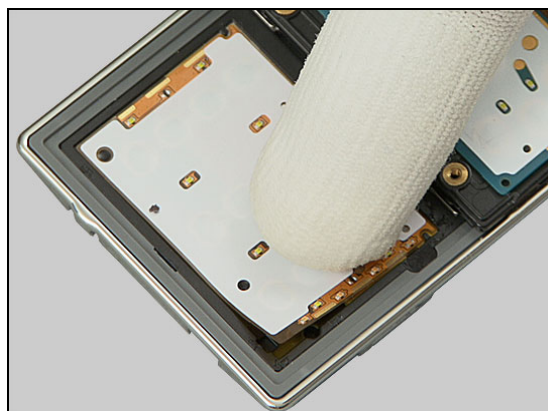
The Key Flex Module to be installed should be placed against the borders as indicated by the pointers.



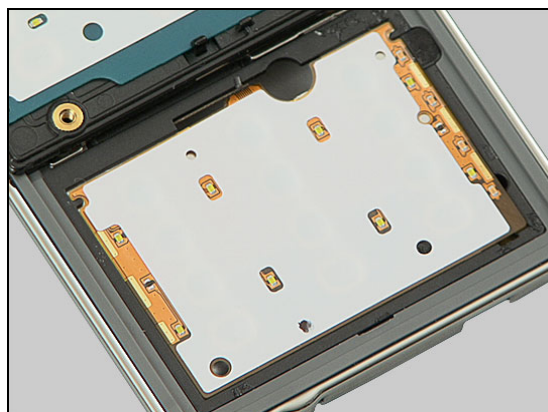
Place the Key Flex Module against the borders,



and press with your fingers,



to make it securely attached to the Slider Unit.



## Replacement

### 4.30 Navigation Key PBA

*Follow the 3.1 – 3.2 & 3.6 – 3.9 Disassembly instructions!*

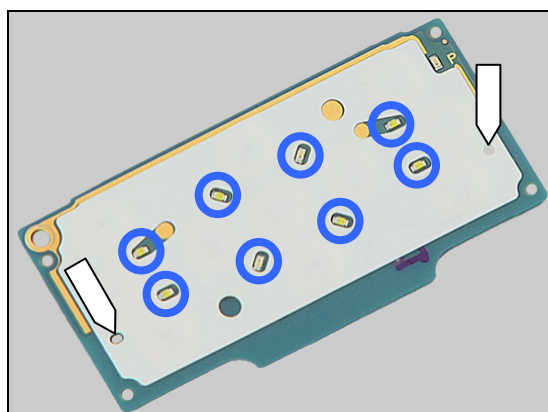
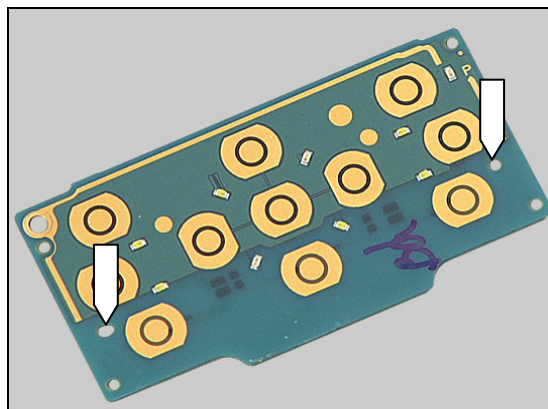
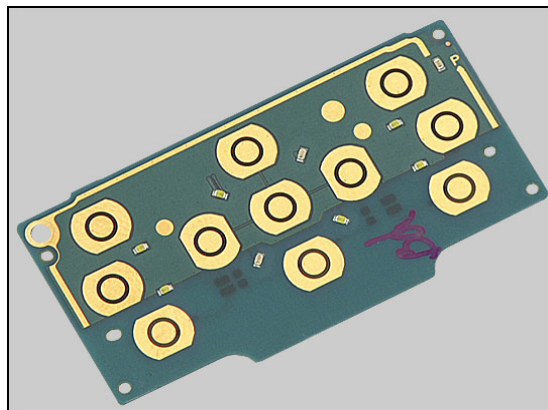
Carry out the installation as described below.

*Follow the 5.2 – 5.5 & 5.9 - 5.10 Reassembly instructions!*

#### INSTALLATION

Use these two holes as alignment for the corresponding holes of the Dome Sheet during installation.

Attach the Dome Sheet and verify that the two holes are properly aligned with the holes of the Navigation Key PBA as described above and that the eight LEDs can emit light through the holes of the Dome Sheet (as indicated by the blue circles).







## Replacement

### 4.31 Slider Flex Module

*Follow the 3.1 – 3.4 & 3.6 – 3.10 Disassembly instructions!*

Carry out the removal instructions as described below.

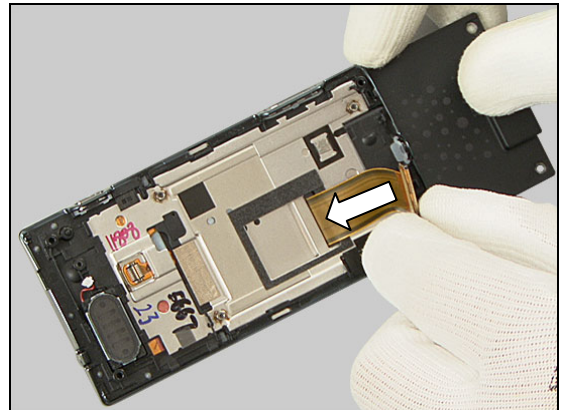
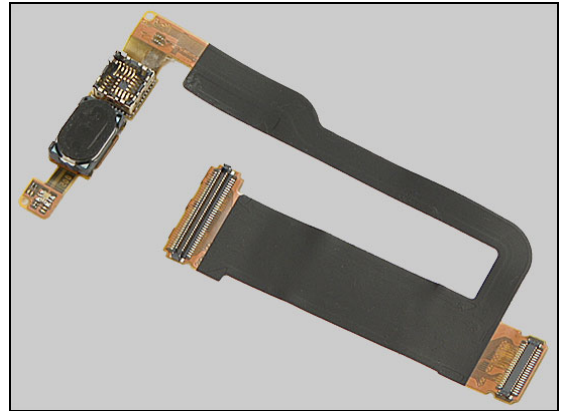
*Follow the 4.32 Removal/Installation instructions.*

Carry out the installation instructions as described below.

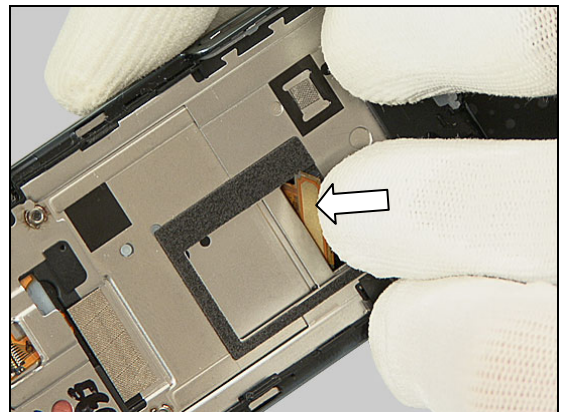
*Follow the 5.1 – 5.5 & 5.7 – 5.10 Reassembly instructions!*

#### REMOVAL

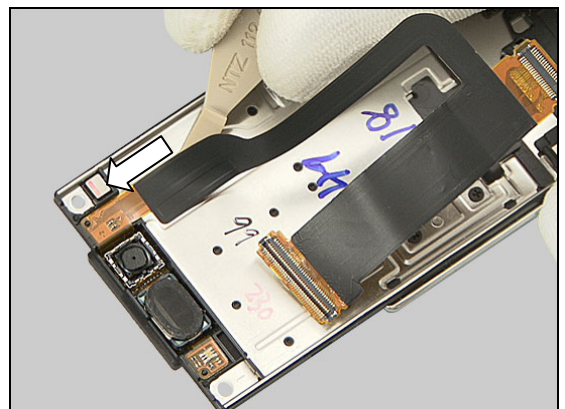
Push this end of the Slider Flex Module through the slot of the Slider Unit.



Turn the BtB connector in a slight angle to be able to make it pass through the slot.



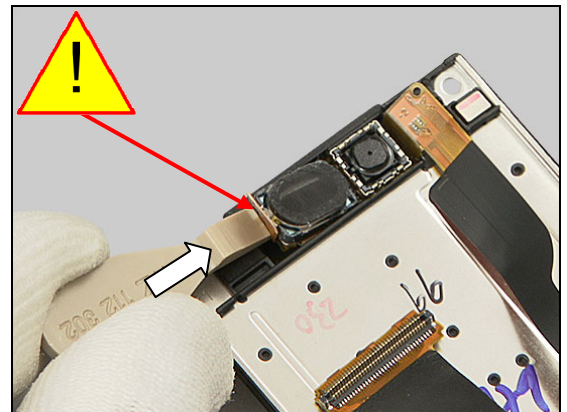
Use the Front Opening Tool to release the Slider Flex Module from the Sliding Unit.



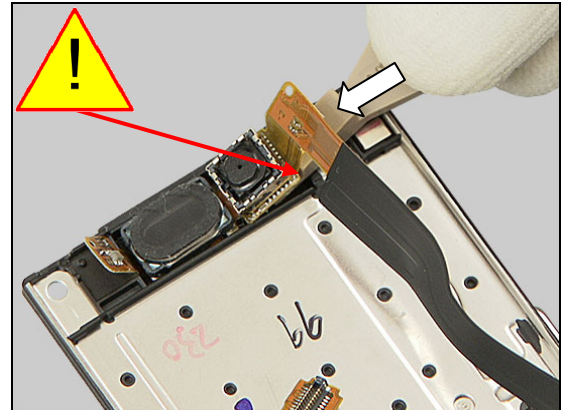


## Replacement: Slider Flex Module

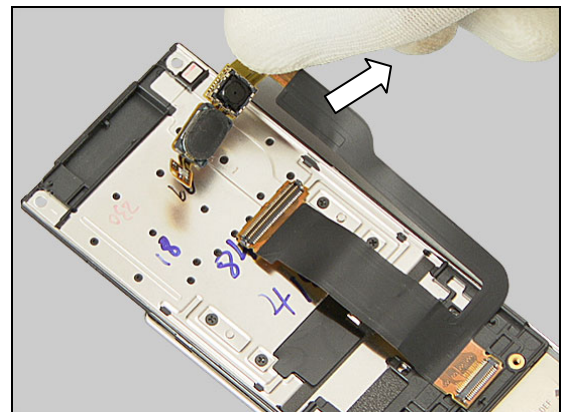
Use the Front Opening Tool with great care to release the Slider Flex Module at the top,



on both sides,

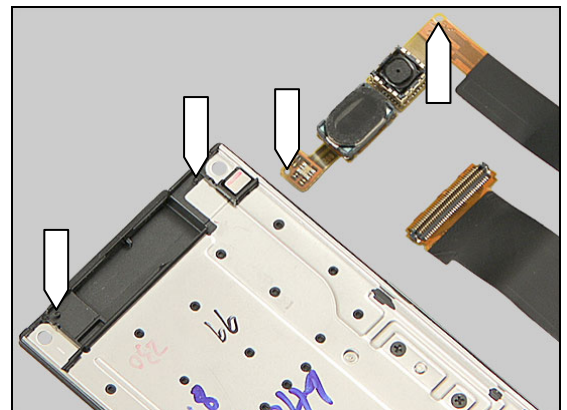


until the Slider Flex Module is entirely released and can be removed.



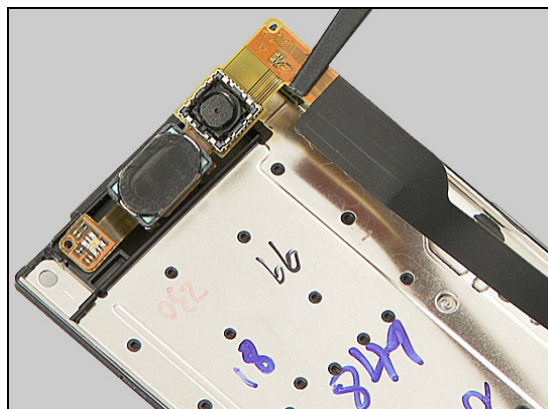
## INSTALLATION

Guiding pegs and holes!

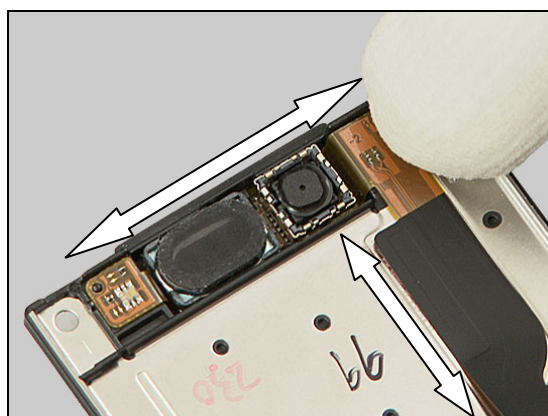


## Replacement: Slider Flex Module

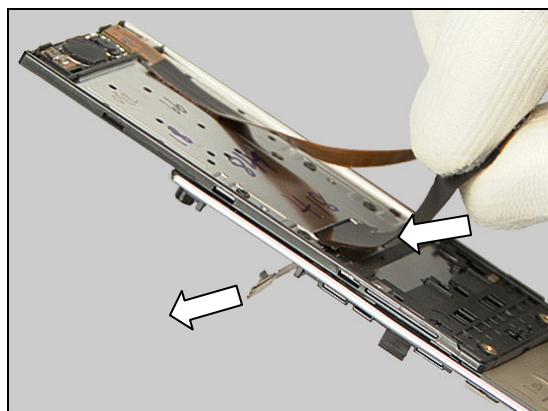
Position the Slider Flex Module according to the guiding pegs and holes,



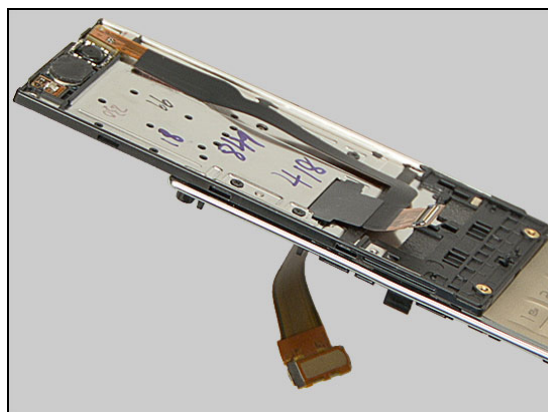
and press with your fingers to attach it to the Slider Unit.



Insert the BtB end of the Slider Flex Module through the slot of the Slider Unit,



as far as it goes.





## Replacement

### 4.32 Camera - Front

*Follow the 3.1 – 3.4 & 3.6 – 3.10 Disassembly instructions!*

*Follow the 4.31 Removal instructions!*

Carry out the replacement as described below.

*Follow the 4.31 Installation instructions!*

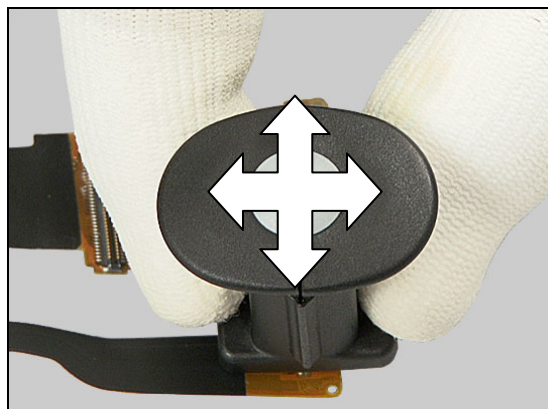
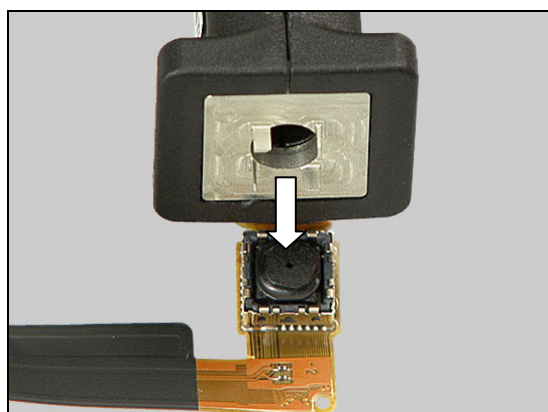
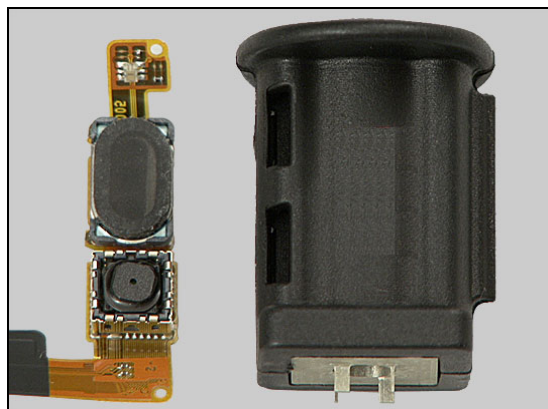
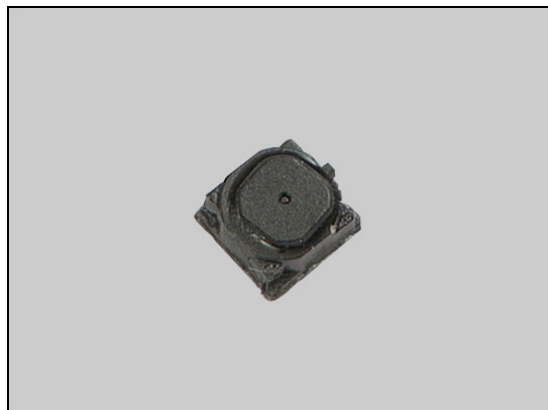
*Follow the 5.1 – 5.5 & 5.7 – 5.10 Reassembly instructions!*

#### REMOVAL

The blades on this Camera Removal Tool is symmetrical on all four sides, so no attention has to be paid to on how to insert the tool!

Insert the tool all the way into the Camera Socket with the Camera Removal Tool.

Wag the tool, as indicated by the quad arrow, to release the Camera from its socket,





## Replacement: Camera - Front

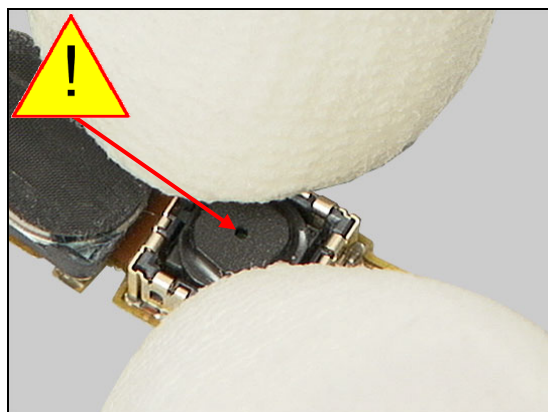
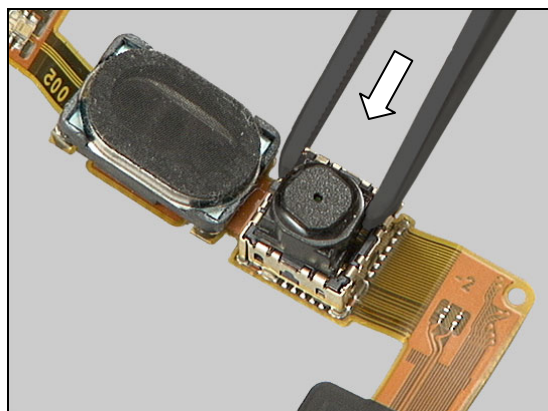
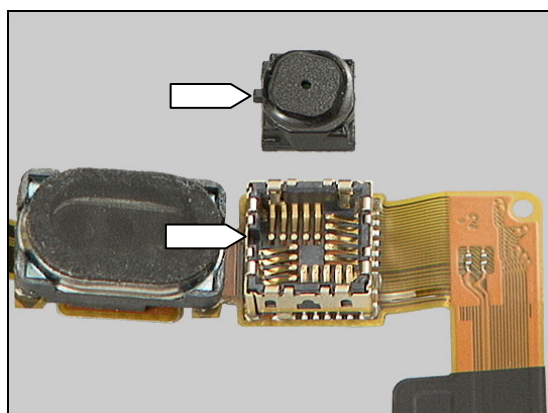
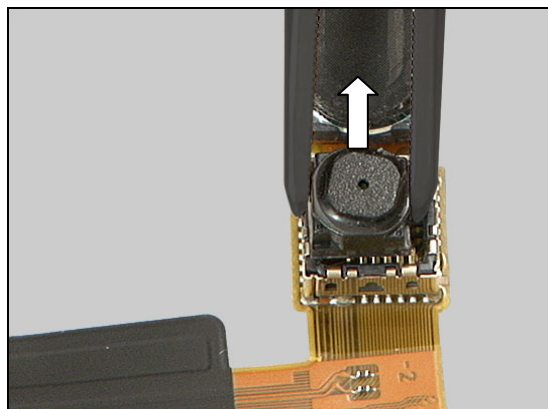
so that it can be removed.

### INSTALLATION

**Note the keying, camera – socket!**

Place the Camera inside and in level with the socket,

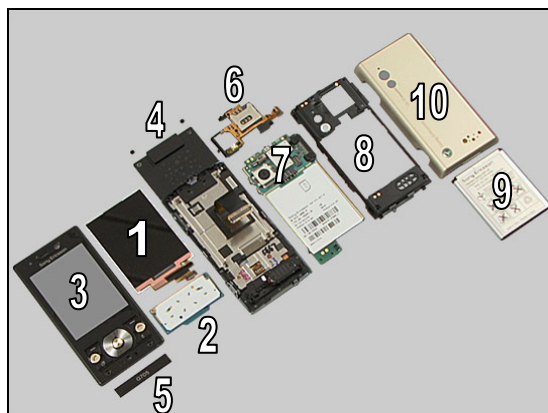
and press with your fingers, without touching the camera lens, to the bottom of the socket.



## 5 Reassembly

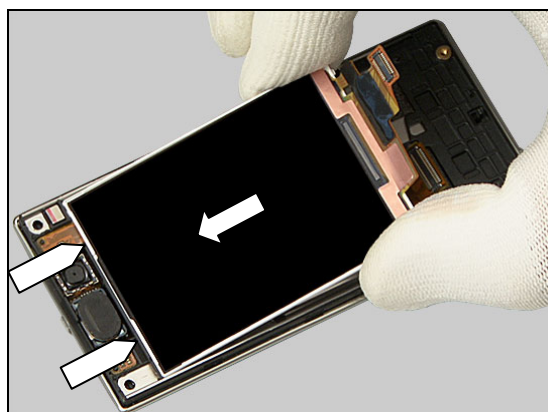
The reassembly is done in the following order:

1. Display
2. Navigation Key Unit
3. Front Cover
4. Screw Sheets
5. Co-branding
6. SIM Flex/Carrier Unit
7. Main PBA
8. Rear Cover
9. Battery
10. Battery Cover

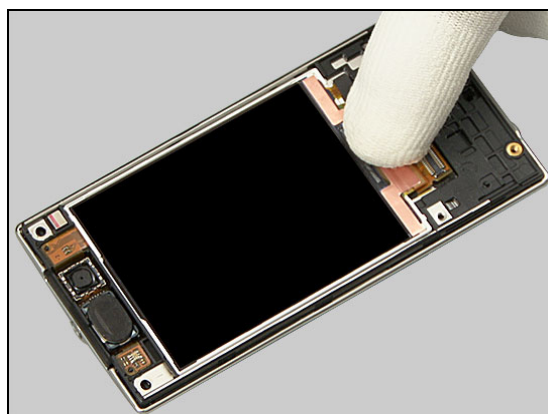


### 5.1 Display

Hold the Display in a slight angle and insert it at the top as indicated by the pointers and the arrow.



Push the Display down into its proper position.



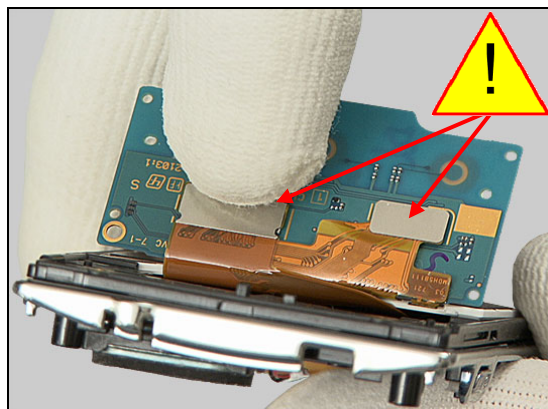
### 5.2 Navigation Key Unit

Hold the Navigation Key Unit vertically as shown in picture.

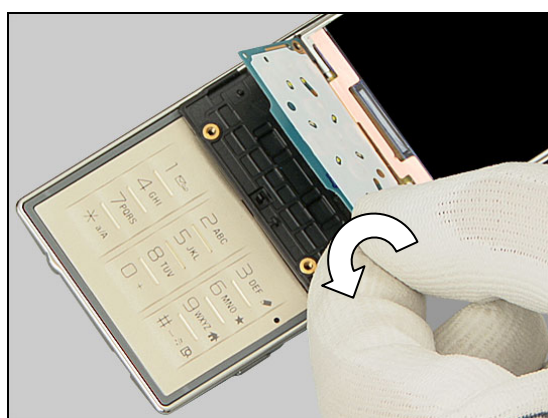


## Reassembly

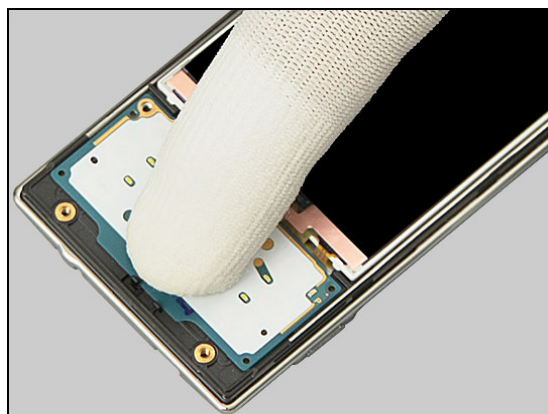
Use your fingers to connect the two BtB connectors.



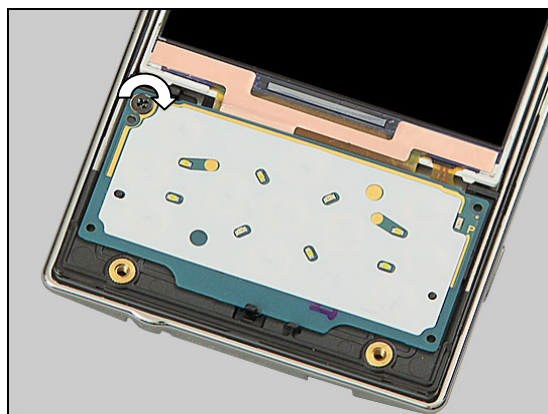
Turn the Navigation Key Unit back to its horizontal position.



Press with your finger to secure its position.



Apply 10 Ncm torque when tightening the 1.6 mm black screw with the JCIS bit.



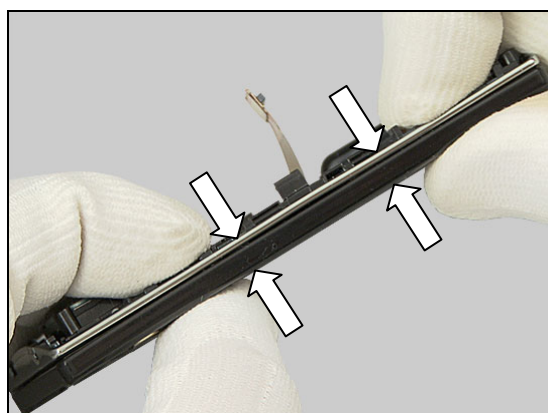
## Reassembly

### 5.3 Front Cover

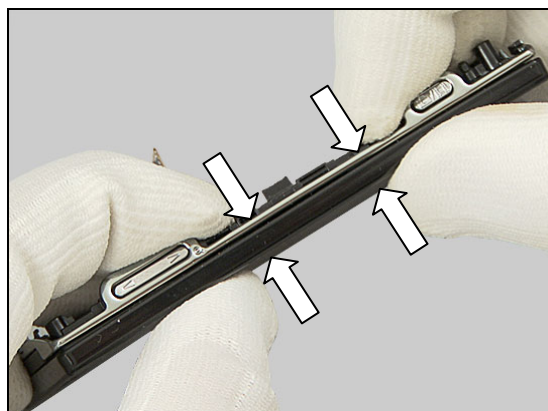
Place the Front Cover on top of the Slider Unit.



Press like this to snap this side of the Front Cover to the Slider Unit.



Do the same on the opposite side.



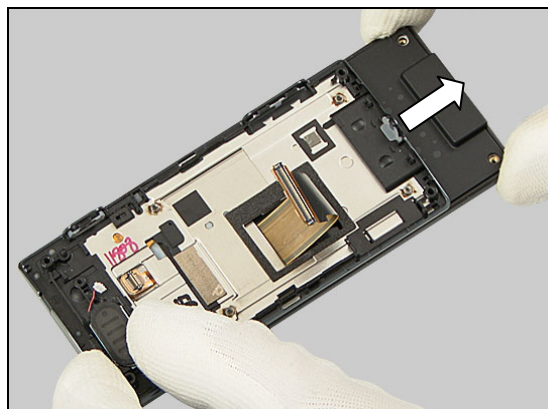
Apply 10 Ncm torque when tightening the two 2.3 mm nickel screws with the JCIS bit.





## Reassembly

Open the slider.

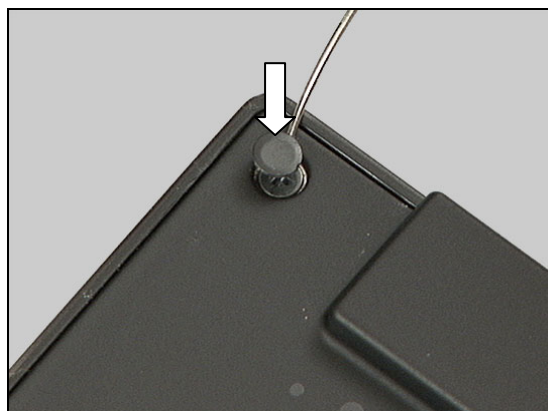


Apply 10 Ncm torque when tightening the two 1.6 mm black screws with the JCIS bit.



### 5.4 Screw Sheets

Attach a new Screw Sheet on top of one of the screws.



Press with your finger to make it properly attached.



## Reassembly

Do the same on top of the second screw.



### 5.5 Co-Branding

Close the slider.



Place a new Co-Branding in its proper position.



Press along the surface to make the Co-Branding securely attached.

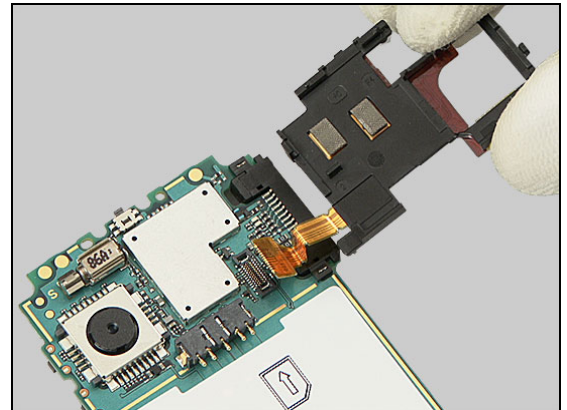




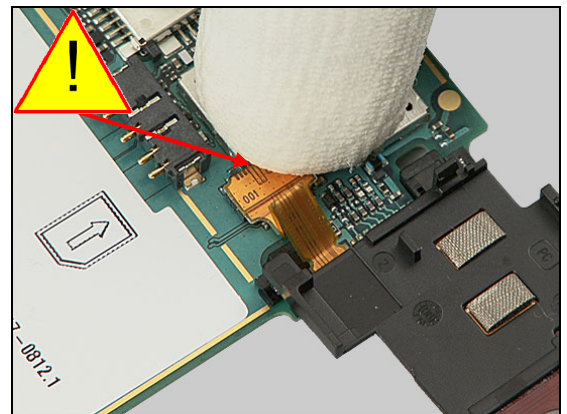
## Reassembly

### 5.6 SIM Flex/Carrier Unit

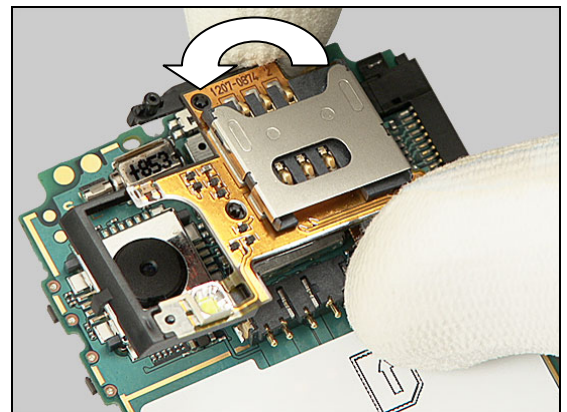
Hold the SIM Flex/Carrier Unit like this,



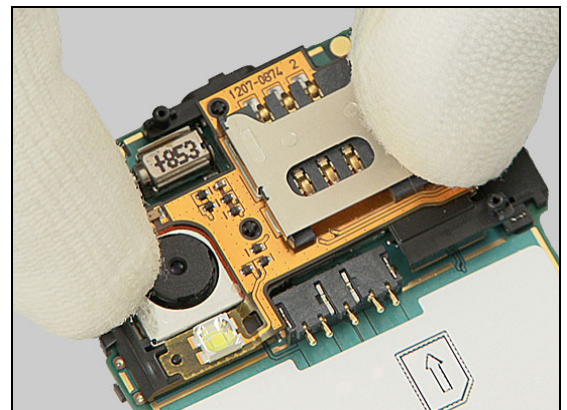
and connect its BtB connector to the Main PBA by using your finger.



Turn the SIM Flex/Carrier Unit over the Main PBA.



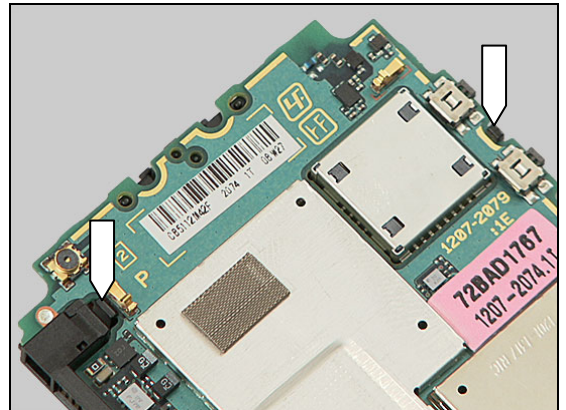
Press on both sides of the SIM Flex/Carrier Unit,





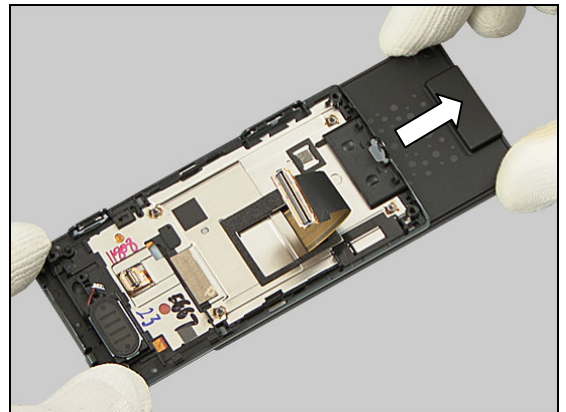
## Reassembly

to make the two hooks snap onto the Main PBA.

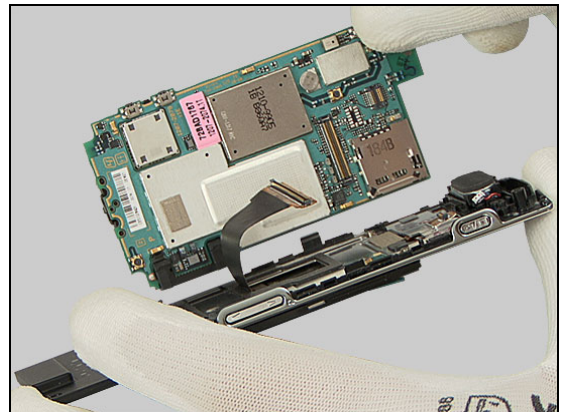


### 5.7 Main PBA

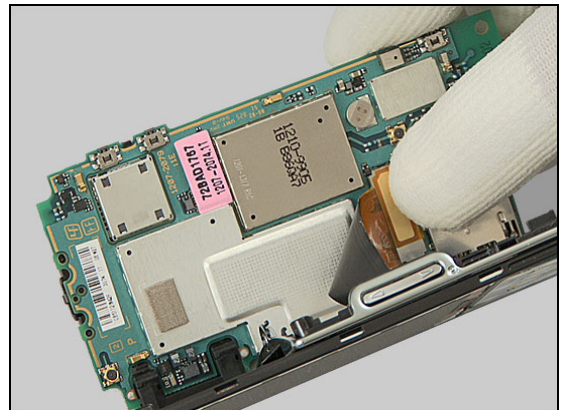
Open the slider.



Place the Main PBA next to the Slider Unit like this,



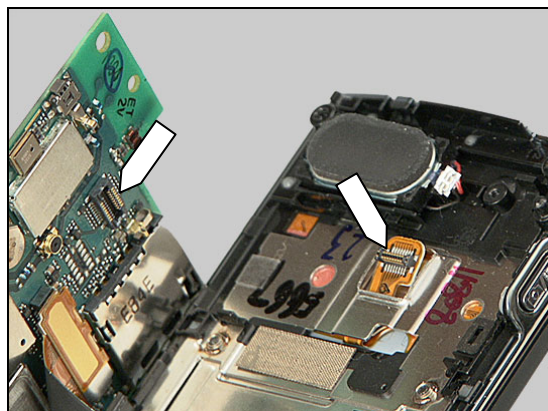
and connect the BtB connector by using your finger.



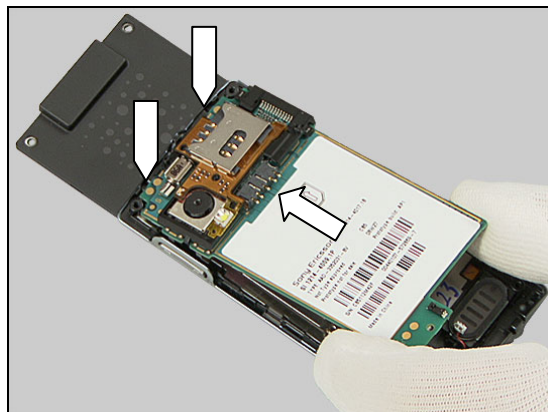


## Reassembly

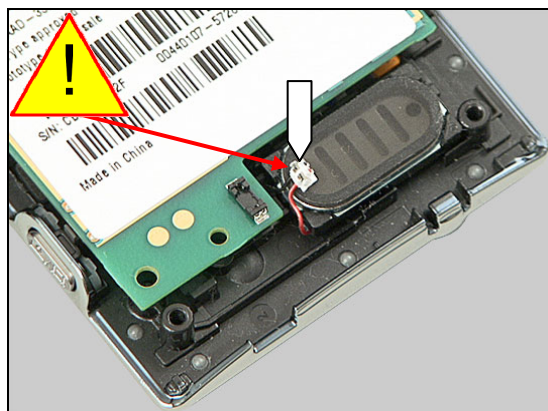
There is one more BtB connector to be connected to the Main PBA, but this is done by itself when the Main PBA is secured to the Slider Unit.



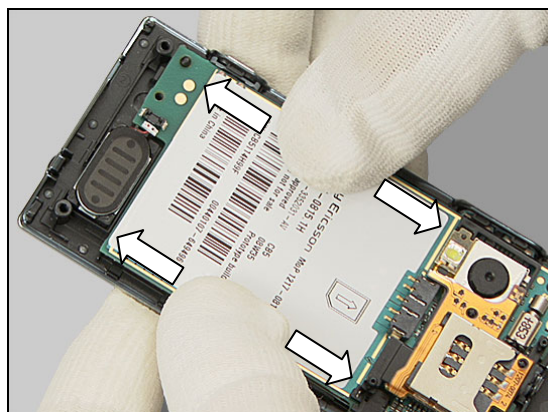
Hold the Main PBA in a slight angle and insert it at the top as indicated by the pointers and the arrow.



Before securing the Main PBA to the Slider Unit, check and, if necessary, move the Loudspeaker connector/cables to avoid that they become squeezed by the Main PBA.



Press on both sides of the PBA to secure it to the Slider Unit.

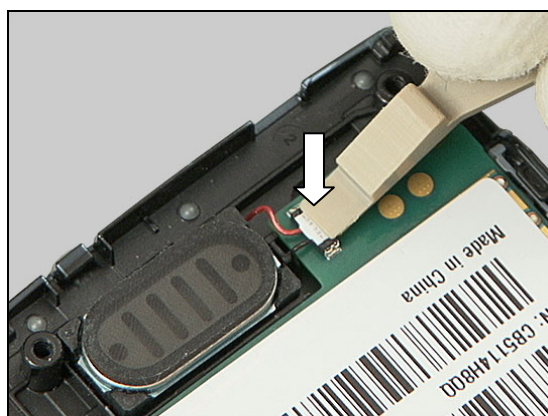


## Reassembly

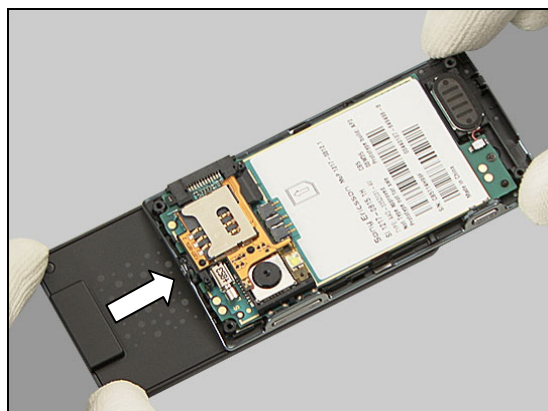
Apply 10 Ncm torque when tightening the 2.8 mm black screw with the JCIS bit.



Connect the Loudspeaker by pressing its connector from the top into the connector of the Main PBA.



Close the slider.



## 5.8 Rear Cover

Place the Rear Cover on top of the Main PBA in its proper position.

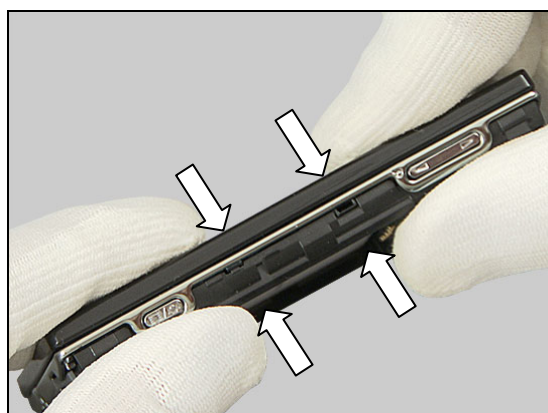


## Reassembly

Press like this to snap this side of the Rear Cover to the Slider Unit.



Do the same on the opposite side.



Apply 22 Ncm torque when tightening the four 4.5 mm nickel screws with torx bit no. 6.



## 5.9 Battery

Insert the Battery at the top like this.





## Reassembly

Press at the bottom to secure its position.



### 5.10 Battery Cover

Hold the Battery Cover in a 45° angle and insert the two hooks of the Battery Cover into the pockets of the Rear Cover,



and close the Battery Cover.



Press on both sides to make it snap onto the Rear Cover.





## Reassembly

Push the knob lock in the direction of the arrow to lock the Battery Cover.





## 6 Revision History

Rev.	Date	Changes / Comments
1	2008-Nov-06	Initial release